



# Peacehaven Botanic Park Herbarium

Ben Gilbert Collection Project Book

Compiled by Bernadette Sear for the Friends of Peacehaven, 2025.

## Acknowledgements

I acknowledge the Traditional Owners of the land that I work on. This project was completed in Highfield and Toowoomba, on the lands of the Waka Waka language tribes, currently under custodianship of the Bunya People's Aboriginal Corporation. The specimens held in the Ben Gilbert Collection were collected from the property now called Gummingurru in Cawdor, Queensland. This property was owned by Ben Gilbert however after realizing its significance as a Cultural Site traditionally used for initiation and ceremony, it was eventually returned to the Traditional Owners. I thank the Traditional Owners for their support in this project and for allowing me to share the beauty of their Country every day.

I would also like to acknowledge the support of the Friends of Peacehaven and the University of Southern Queensland in enabling this project. Special thanks to Jeff Clewett, Barbara McKenzie and Diana Beal for sharing their time and expertise and to the Peacehaven Nursery Volunteers who literally opened doors and shared liberal amounts of morning tea and encouragement.

## Executive summary

This project picture book represents the botanic specimens of the Ben Gilbert Collection held in the herbarium contained at Peacehaven Botanic Park.

The Ben Gilbert Collection consists of 132 specimens. This Collection was collected from his property in Cawdor during the 1970s and donated to the Friends of Peacehaven in 2010 by Jean Gundry, who is Ben Gilbert's daughter. Although exact dates and locations are not available, the collection is an accurate representation of some of the plants found in the Highfields area before urbanisation.

The Peacehaven Herbarium collection is currently stored in plastic archive boxes to ensure a moisture and insect free environment for these fragile specimens. Access to these botanic specimens is therefore limited and care must be taken not to expose them to threats and damage. It is hoped that digitising this collection encourages greater access to, and appreciation of, this historic record.

Front Cover Detail: Ebenaceae - *Diospyros humilis*.  
(Small leaved ebony) PHBG032

## Contents

	Page
Acknowledgements	2
Executive Summary	2
<b>Contents</b>	<b>3</b>
Acanthaceae - <i>Hypoestes floribunda</i> R. Br. PHBG001	8
Amaranthaceae - <i>Nyssanthes diffusa</i> R. Br. (Barbed-wire plant) PHBG002	9
Apocynaceae - <i>Alstonia constricta</i> F. Muell. (Bitter bark) PHBG003	10
Apocynaceae - <i>Alyxia ruscifolia</i> R. Br. (Chain fruit) PHBG004	11
Apocynaceae - <i>Carissa ovata</i> R. Br. (Currant bush) PHBG005	12
Apocynaceae - <i>Parsonsia lanceolata</i> R. Br. (Rough silkpod) PHBG006	13
Apocynaceae - <i>Parsonsia leichhardtii</i> F. Muell. (Black silkpod) PHBG007	14
Apocynaceae - <i>Parsonsia lilacina</i> F. Muell. (Crisped silkpod) PHBG008	15
Apocynaceae - <i>Parsonsia straminea</i> (R. Br.) F. Muell. (Monkey rope vine) PHBG009	16
Araliaceae - <i>Polyscias elegans</i> (C. Moore & F. Muell.) Harms (Celerywood) PHBG010	17
Asteraceae - <i>Cassinia laevis</i> R. Br. (Cough bush) PHBG011	18
Asteraceae - <i>Olearia canescens</i> (Benth.) Hutch. (Grey olearia) PHBG012	19
Asteraceae - <i>Ozothamnus bidwillii</i> (Benth.) Anderb. PHBG013	20
Bignoniaceae - <i>Pandorea jasminoides</i> (G. Don) K. Schum. (Bower vine) PHBG014	21
Bignoniaceae - <i>Pandorea pandorana</i> (Andrews) Steenis (Wonga vine) PHBG015	22
Caesalpiniaceae - <i>Senna coronilloides</i> (Benth.) Randell (Jewel box senna) PHBG016	23
Capparaceae - <i>Apophyllum anomalum</i> F. Muell. (Warrior bush) PHBG017	24
Capparaceae - <i>Capparis arborea</i> (F. Muell.) Maiden (Caper bush) PHBG018	25
Capparaceae - <i>Capparis loranthifolia</i> Lindl. (Narrow-leaved bumble) PHBG019	26
Capparaceae - <i>Capparis mitchellii</i> Lindl. (Wild orange) PHBG020	27
Capparaceae - <i>Capparis sarmentosa</i> A. Cunn. ex. Benth. (Climbing Caper) PHBG021	28
Celastraceae - <i>Celastrus paniculatus</i> Willd. (Black oil tree) PHBG022	29
Celastraceae - <i>Denhamia bilocularis</i> (F. Muell.) Loes PHBG023	30
Celastraceae - <i>Denhamia pittosporoides</i> F. Muell. (Veiny Denhamia) PHBG024	31
Celastraceae - <i>Elaeodendron australe</i> Vent. (Red olive plum) PHBG025	32
Celastraceae - <i>Siphonodon australis</i> Benth. (Ivory wood) PHBG026	33
Chenopodiaceae - <i>Atriplex semibaccata</i> R. Br. (Creeping saltbush) PHBG027	34
Chenopodiaceae - <i>Maireana villosa</i> (Lindl.) Paul. G. Wilson (Cotton bush) PHBG028	35
Chenopodiaceae - <i>Rhagodia</i> sp. (Berry saltbush) PHBG029	36
Cucurbitaceae - <i>Diplocyclos palmatus</i> (L.) Jeffrey (Native bryony) PHBG030	37

Ebenaceae - Diospyros australis (R. Br.) Hiern (Black plum) [1 of 2] PHBG031	38
Ebenaceae - Diospyros australis (R. Br.) Hiern (Black plum) [2 of 2] PHBG031	39
Ebenaceae - Diospyros humilis (R. Br.) F. Muell. (Small-leaved ebony) PHBG032	40
<i>Detail of PHBG032 also found on front cover</i>	
Erythroxylaceae - Erythroxylum australe F. Muell. (Dogwood) PHBG033	41
Euphorbiaceae - Acalypha capillipes Muell. Arg. (Small-leaved acalypha) PHBG034	42
Euphorbiaceae - Alchornea ilicifolia (J. Sm.) Muell. Arg. (Native holly) PHBG035	43
Euphorbiaceae - Baloghia inophylla (G. Forst.) P.S. Green (Scrub bloodwood) PHBG036	44
Euphorbiaceae - Bertya oleifolia Planch. PHBG037	45
Euphorbiaceae - Breynia oblongifolia Muell. Arg. (Coffee bush) PHBG038	46
Euphorbiaceae - Bridelia leichhardtii Baill. ex Muell. Arg. (Small-leaved brush ironbark) PHBG039	47
Euphorbiaceae - Claoxylon australe Baill. (Brittlewood) PHBG040	48
Euphorbiaceae - Croton insularis Baill. (Silver croton) PHBG041	49
Euphorbiaceae - Croton phebalioides F. Muell. ex Muell. Arg. (Narrow-leaved croton) PHBG042	50
Euphorbiaceae - Excoecaria dallachyana (Baill.) Benth. (Scrub poison tree) PHBG043	51
Fabaceae - Erythrina vespertilio Benth. (Bat-wing coral tree) PHBG044	52
Fabaceae - Glycine clandestina J.C. Wendl. (Twining glycine) PHBG045	53
Fabaceae - Hovea longipes Benth. (Brush hovea) PHBG046	54
Fabaceae - Hovea pannosa A. Cunn. ex-Hook. f. (Rusty hovea) PHBG047	55
Fabaceae - Indigofera brevidens Benth. PHBG048	56
Fabaceae - Sophora fraseri Benth. PHBG049	57
Flacourtiaceae - Casearia multinervosa C.T. White & Sleumer (Casearia) PHBG050	58
Lamiaceae - Clerodendrum tomentosum R. Br. (Hairy-leaved lolly bush) PHBG051	59
Lamiaceae - Spartothamnella juncea (A. Cunn. ex Walp.) Briq. (Square-leaved broom) PHBG052	60
Lamiaceae - Vitex lignum-vitae A. Cunn. ex-Schauer (Satinwood) PHBG053	61
Laxmanniaceae - Eustrephus latifolius R. Br. ex-Ker Gawl. (Wombat berry) PHBG054	62
Loganiaceae - Strychnos psilosperma F. Muell. (Strychnine tree) PHBG055	63
Loranthaceae - Amyema cambagei (Blakely) Danser (She-oak mistletoe) PHBG056	64
Loranthaceae - Amyema congener subsp. rotundifolia Barlow. PHBG057	65
Loranthaceae - Amyema lucasii (Blakely) Danser. PHBG058	66
Loranthaceae - Amyema miquelii (Lehm. ex Miq.) Tiegh. PHBG059	67
Loranthaceae - Amylothea dictyophleba (F. Muell.) Tiegh. PHBG060	68
Loranthaceae - Lysiana subfalcata (Hook.) Barlow. PHBG061	69
Malvaceae - Abutilon oxycarpum (F. Muell.) F. Muell. ex Benth. (Flannel weed) PHBG062	70
Meliaceae - Melia azedarach L. (White cedar) PHBG063	71

Meliaceae - <i>Toona ciliata</i> M. Roem. (Red cedar) PHBG064	72
Meliaceae - <i>Turraea pubescens</i> Hell. (Turraea) PHBG065	73
Mimosaceae - <i>Acacia decora</i> Rchb. (Pretty wattle) PHBG066	74
Mimosaceae - <i>Acacia implexa</i> Benth. (Hickory wattle) PHBG067	75
Mimosaceae - <i>Acacia irrorata</i> Sieber ex Spreng. (Green wattle) PHBG068	76
Mimosaceae - <i>Acacia salicina</i> Lindl. (Sally wattle) PHBG069	77
Moraceae - <i>Ficus rubiginosa</i> Desf. ex-Vent. (Port Jackson fig) PHBG070	78
Moraceae - <i>Maclura cochinchinensis</i> (Lour.) Corner (Cockspur thorn) PHBG071	79
Moraceae - <i>Streblus brunonianus</i> (Endl.) F. Muell. (Whalebone tree) PHBG072	80
Moraceae - <i>Trophis scandens</i> (Lour.) Hook. & Arn. (Burney vine) PHBG073	81
Myrsinaceae - <i>Myrsine variabilis</i> R. Br. (Muttonwood) PHBG074	82
Myrtaceae - <i>Angophora woodsiana</i> F.M. Bailey (Apple box) PHBG075	83
Myrtaceae - <i>Eucalyptus crebra</i> F. Muell. (Narrow-leaved ironbark) PHBG076	84
Myrtaceae - <i>Eucalyptus populnea</i> F. Muell. (Poplar box) PHBG077	85
Myrtaceae - <i>Eucalyptus</i> sp. aff. <i>bancroftii</i> (Maiden) Maiden (Orange gum) PHBG078	86
Myrtaceae - <i>Gossia bidwillii</i> (Benth.) N. Snow & Guyer (Python tree) PHBG079	87
Oleaceae - <i>Jasminum racemosum</i> F. Muell. (Slender jasmine) PHBG080	88
Oleaceae - <i>Jasminum simplicifolium</i> subsp. <i>australiense</i> P.S. Green (Native jasmine) PHBG081	88
Oleaceae - <i>Notelaea linearis</i> Benth. (Native olive) PHBG082	89
Oleaceae - <i>Notelaea macrocarpa</i> R. Br. (Native olive) PHBG083	90
Orchidaceae - <i>Dendrobium tenuissimum</i> Rupp (Rat-tail orchid) PHBG084	91
Phyllanthaceae - <i>Actephila lindleyi</i> (Steud.) Airy Shaw (Actephila) PHBG085	92
Pittosporaceae - <i>Bursaria incana</i> Lindl. (Australian blackthorn) PHBG086	93
Pittosporaceae - <i>Pittosporum phylliraeoides</i> (Weeping pittosporum) PHBG087	94
Pittosporaceae - <i>Pittosporum viscidum</i> L. Cayzer, Crisp & I. Telford (Black-fruited thornbush) PHBG088	95
Polypodiaceae - <i>Pyrrosia confluens</i> (R. Br.) Ching (Robber fern) PHBG089	96
Proteaceae - <i>Grevillea robusta</i> A. Cunn. ex R. Br. (Silky oak) PHBG090	97
Putranjivaceae - <i>Drypetes deplanchei</i> (Brongn. & Gris) Merr. (Yellow tulipwood) PHBG091	98
Ranunculaceae - <i>Clematis decipiens</i> H. Eichler ex Jeanes (Headache vine) PHBG092	99
Rhamnaceae - <i>Alphitonia excelsa</i> (A. Cunn. ex-Fenzl) Benth. (Red ash) PHBG093	100
Rhamnaceae - <i>Pomaderris queenslandica</i> C.T. White (Scant Pomaderris) PHBG094	101
Rubiaceae - <i>Everistia vacciniifolia</i> (F. Muell.) S.T. Reynolds & R.J.F. Hend. (Small-leaved canthium) PHBG095	102
Rubiaceae - <i>Psydrax odorata</i> f. <i>buxifolia</i> (Benth.) S.T. Reynolds & R.J.F. Hend. (Stiff canthium) PHBG096	103

Rubiaceae - <i>Triflorensia cameronii</i> (C.T. White) S.T. Reynolds PHBG097	104
Rutaceae - <i>Acronychia laevis</i> J.R. Forst. & G. Forst. (Hard aspen) PHBG098	105
Rutaceae - <i>Dinosperma erythrococtum</i> (F. Muell.) T.G. Hartley (White doughwood) PHBG099	106
Rutaceae - <i>Flindersia australis</i> R. Br. (Crow's ash) PHBG100	107
Rutaceae - <i>Flindersia collina</i> F.M. Bailey (Broad-leaved leopard tree) PHBG101	108
Rutaceae - <i>Geijera salicifolia</i> Schott (Broad-leaved scrub wilga) PHBG102	109
Rutaceae - <i>Zanthoxylum brachyacanthum</i> F. Muell. (Thorny yellow-wood) PHBG103	110
Santalaceae - <i>Choretrum candollei</i> F. Muell. ex Benth. (White sour bush) PHBG104	111
Santalaceae - <i>Exocarpos latifolius</i> R. Br. (Broad-leaved scrub cherry) PHBG105	112
Santalaceae - <i>Santalum lanceolatum</i> R. Br. (Sandalwood) PHBG106	113
Sapindaceae - <i>Alectryon diversifolius</i> (F. Muell.) S.T. Reynolds (Scrub boonaree ) PHBG107	114
Sapindaceae - <i>Alectryon tomentosus</i> (F. Muell.) Radlk. (Hairy bird's eye) PHBG108	115
Sapindaceae - <i>Atalaya salicifolia</i> (A. DC.) Blume (White wood) PHBG109	116
Sapindaceae - <i>Cupaniopsis parvifolia</i> (F.M. Bailey) L.A.S. Johnson (Small-leaved tuckeroo) PHBG110	117
Sapindaceae - <i>Dodonaea lanceolata</i> F. Muell. (Lance-leaved hop bush) PHBG111	118
Sapindaceae - <i>Dodonaea viscosa</i> subsp. <i>angustissima</i> (DC.) J.G. West PHBG112	119
Sapindaceae - <i>Elattostachys xylocarpa</i> (A. Cunn. ex F. Muell.) Radlk. ( White tamarind) PHBG113	120
Sapotaceae - <i>Planchonella cotinifolia</i> (A. DC.) Dubard (Small-leaved coondoo) PHBG114	121
Smilacaceae - <i>Smilax australis</i> R. Br. (Barbed-wire vine) PHBG115	122
Solanaceae - <i>Solanum ellipticum</i> R. Br. (Wild potato bush) PHBG116	123
Solanaceae - <i>Solanum semiarmatum</i> F. Muell. (Devil's whiskers) PHBG117	124
Solanaceae - <i>Solanum stelligerum</i> Sm. (Devil's needles) PHBG118	125
Sterculiaceae - <i>Brachychiton discolor</i> F. Muell. (Lace bark tree) PHBG119	126
Sterculiaceae - <i>Brachychiton diversifolius</i> (Kurrajong) PHBG120	127
Sterculiaceae - <i>Brachychiton rupestre</i> (T.L. Mitch. ex Lindl.) K. Schum. (Bottle tree) PHBG122	128
Thymelaeaceae - <i>Pimelea pauciflora</i> R. Br. (Poison rice flower) PHBG123	129
Thymelaeaceae - <i>Pimelea latifolia</i> R. Br. PHBG124	130
Urticaceae - <i>Dendrocnide excelsa</i> (Wedd.) Chew (Giant stinging tree) PHBG125	131
Urticaceae - <i>Dendrocnide photinophylla</i> (Kunth) Chew (Shiny leaved stinging tree) PHBG126	132
Viscaceae - <i>Notothixos subaureus</i> Oliv. (Golden mistletoe) PHBG127	133
Viscaceae - <i>Viscum articulatum</i> Burm. f. PHBG128	134
Viscaceae - <i>Cayratia clematidea</i> (F. Muell.) Domin (Slender grape) PHBG129	135
Viscaceae - <i>Cayratia saponaria</i> (Benth.) Domin (Hairy water vine) PHBG130	136
Viscaceae - <i>Cayratia acris</i> (F. Muell.) Domin (Smooth water vine) PHBG131	137

Viscaceae - *Cissus antarctica* Vent. (Kangaroo vine) PHBG132

138

Viscaceae - *Clematicissus opaca* (F. Muell.) Jackes & Rossetto (Forest grape) PHBG133

139



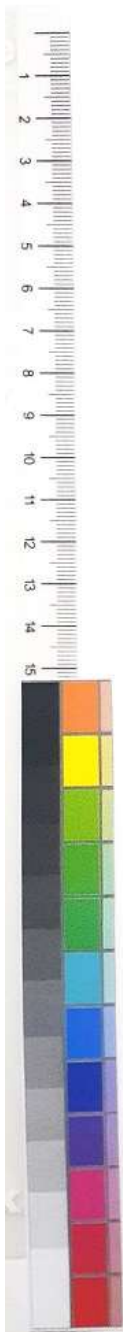
Original Colour and White Scale Bar used in Photography.

Ruler = 10mm/1cm scale.

Acanthaceae

*Hypoestes floribunda* R. Br.

PHBG001



PHBG 001



**PEACEHAVEN BOTANIC PARK HERBARIUM**

**Collector:** Ben Gilbert  
**Plant name:** *Hypoestes floribunda* R. Br.  
**Family:** Acanthaceae  
**Common name(s):**  
**Locality:** 'Regent Vale', Cawdor, Queensland  
**Notes:**

Amaranthaceae

*Nyssanthes diffusa* R. Br. (Barbed-wire plant)

PHBG002



Apocynaceae

*Alstonia constricta* F. Muell. (Bitter bark)

PHBG003



PEACEHAVEN BOTANIC PARK HERBARIUM

**Collector:** Ben Gilbert

**Plant name:** *Alstonia constricta* F. Muell.

**Family:** Apocynaceae

**Common name(s):** bitter bark

**Locality:** 'Regent Vale', Cawdor, Queensland

**Notes:**

Apocynaceae

*Alyxia ruscifolia* R. Br. (Chain fruit)

PHBG004



Apocynaceae

*Carissa ovata* R. Br. (Currant bush)

PHBG005



Apocynaceae

*Parsonsia lanceolata* R. Br. (Rough silkpod)

PHBG006



PEACEHAVEN BOTANIC PARK HERBARIUM

**Collector:** Ben Gilbert

**Plant name:** *Parsonsia lanceolata* R. Br.

**Family:** Apocynaceae

**Common name(s):** rough silkpod

**Locality:** 'Regent Vale', Cawdor, Queensland

**Notes:**

Apocynaceae

*Parsonsia leichhardtii* F. Muell. (Black silkpod)

PHBG007



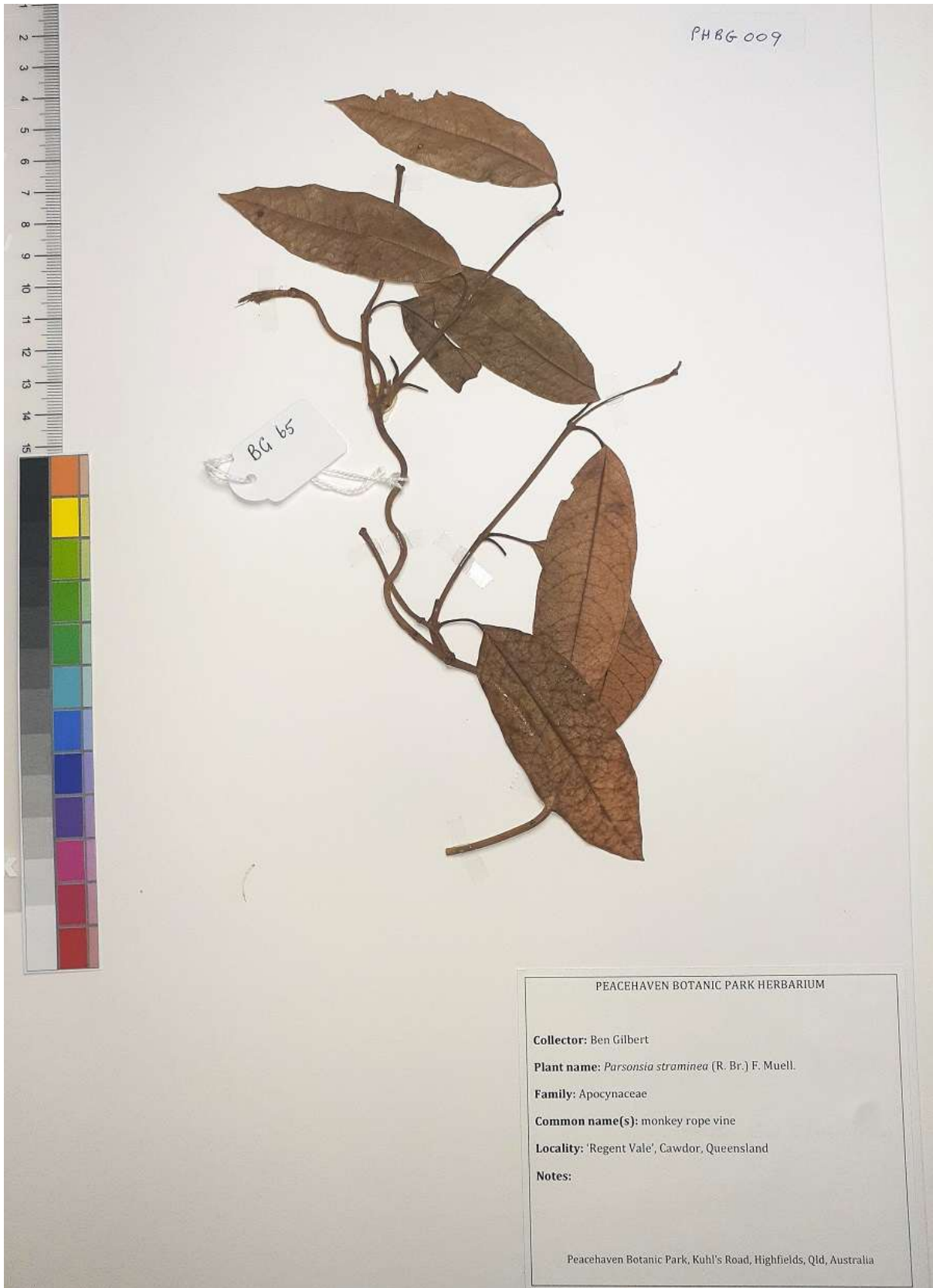
Apocynaceae

*Parsonsia lilacina* F. Muell. (Crisped silkpod)

PHBG008



Apocynaceae    *Parsonsia straminea* (R. Br.) F. Muell. (Monkey rope vine)    PHBG009



PEACEHAVEN BOTANIC PARK HERBARIUM

**Collector:** Ben Gilbert

**Plant name:** *Parsonsia straminea* (R. Br.) F. Muell.

**Family:** Apocynaceae

**Common name(s):** monkey rope vine

**Locality:** 'Regent Vale', Cawdor, Queensland

**Notes:**

Peacehaven Botanic Park, Kuhl's Road, Highfields, Qld, Australia

Araliaceae Polyscias elegans (C. Moore & F. Muell.) Harms (Celerywood) PHBG010



Asteraceae

*Cassinia laevis* R. Br. (Cough bush)

PHBG011



Asteraceae

*Olearia canescens* (Benth.) Hutch. (Grey olearia)

PHBG012



Asteraceae

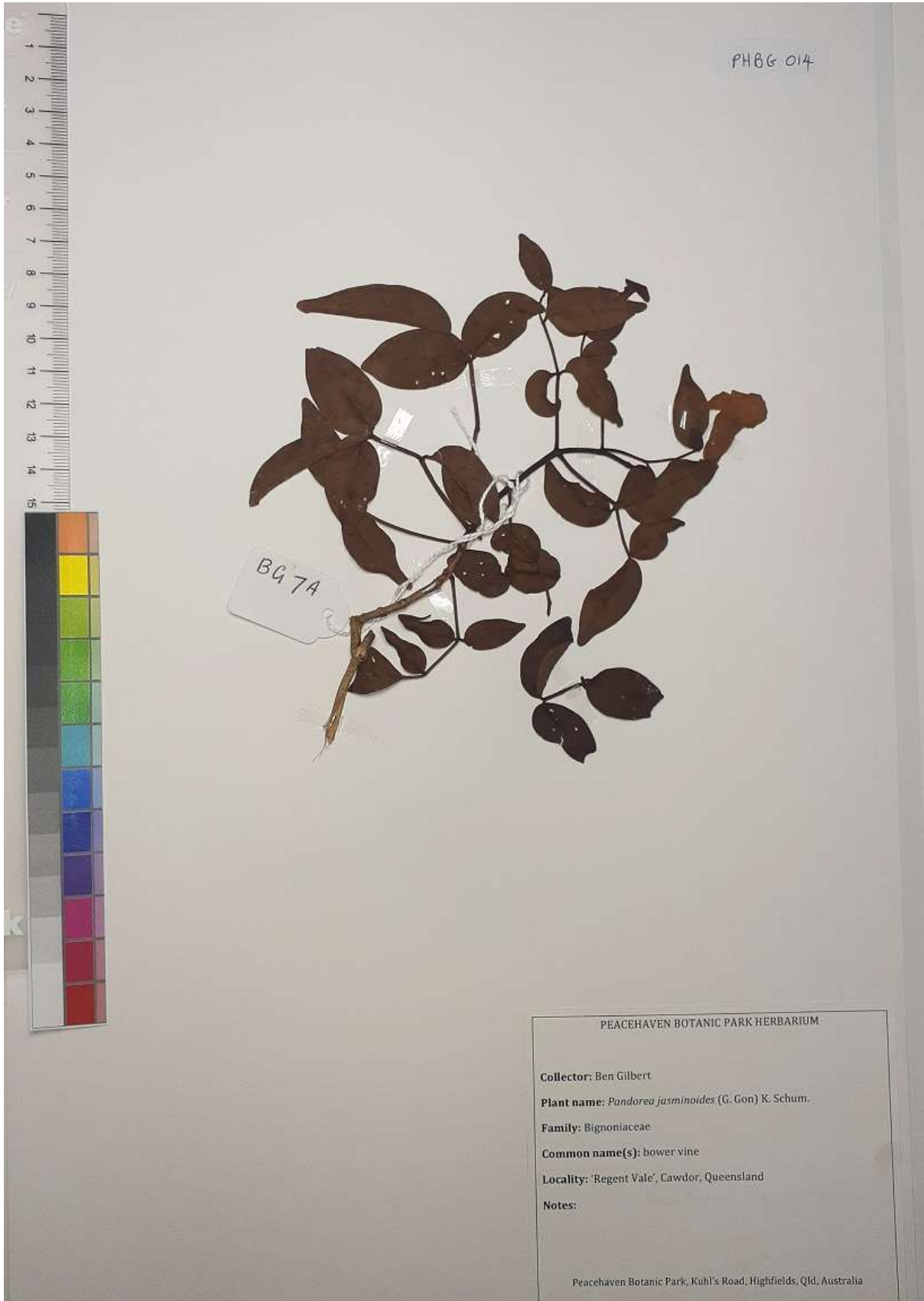
*Ozothamnus bidwillii* (Benth.) Anderb.

PHBG013



Bignoniaceae

*Pandorea jasminoides* (G. Don) K. Schum. (Bower vine) PHBG014

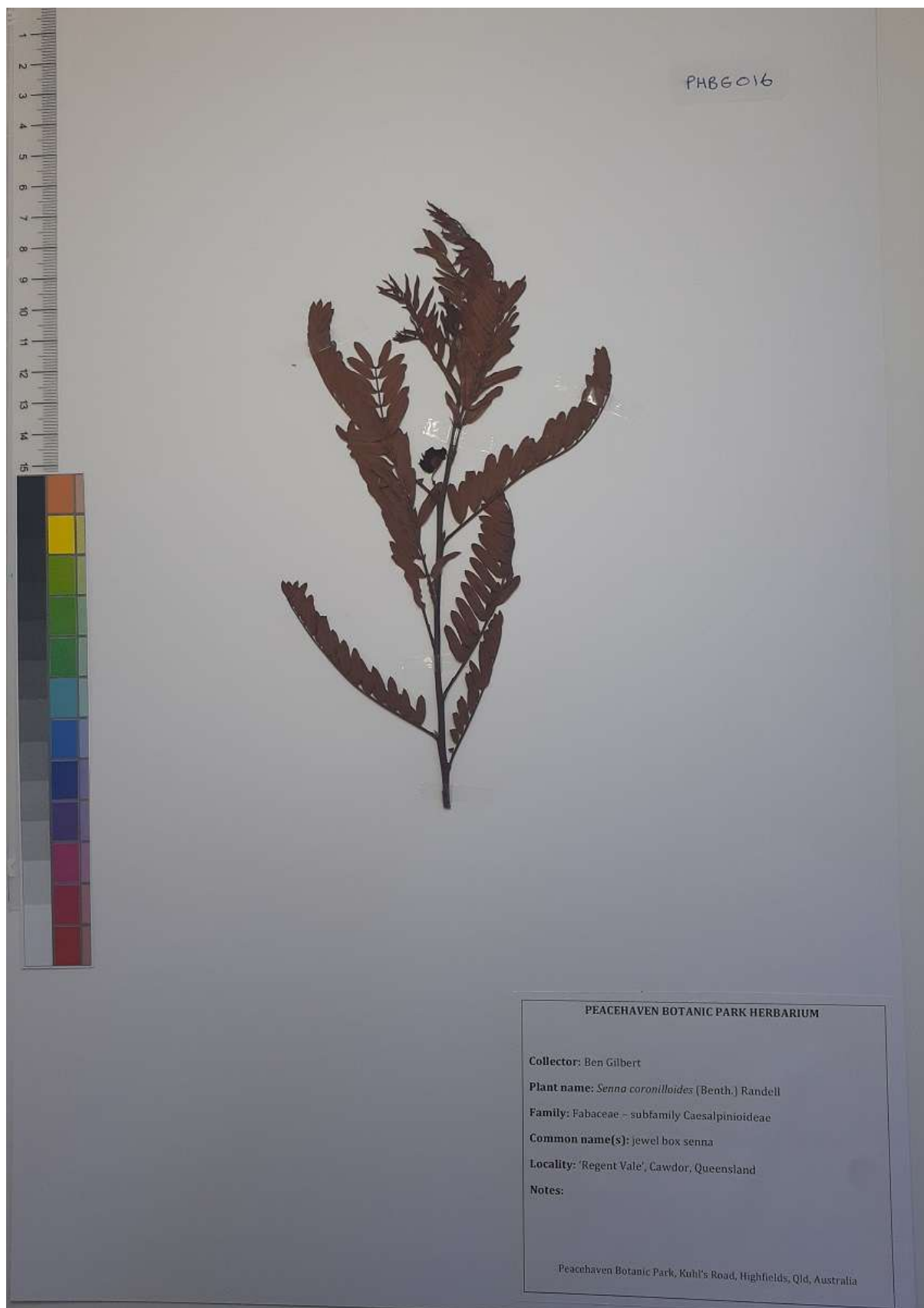


Bignoniaceae

*Pandorea pandorana* (Andrews) Steenis (Wonga vine)

PHBG015



Caesalpinaceae    *Senna coronilloides* (Benth.) Randell (Jewel box senna) PHBG016

Capparaceae

*Apophyllum anomalum* F. Muell. (Warrior bush) PHBG017



Capparaceae

*Capparis arborea* (F. Muell.) Maiden (Caper bush)

PHBG018



Capparaceae *Capparis loranthifolia* Lindl. (Narrow-leaved bumble) PHBG019



Capparaceae

*Capparis mitchellii* Lindl. (Wild orange)

PHBG020



Capparaceae *Capparis sarmentosa* A. Cunn. ex. Benth. (Climbing Caper) PHBG021



Celastraceae

*Celastrus paniculatus* Willd. (Black oil tree)

PHBG022



Celastraceae

*Denhamia bilocularis* (F. Muell.) Loes

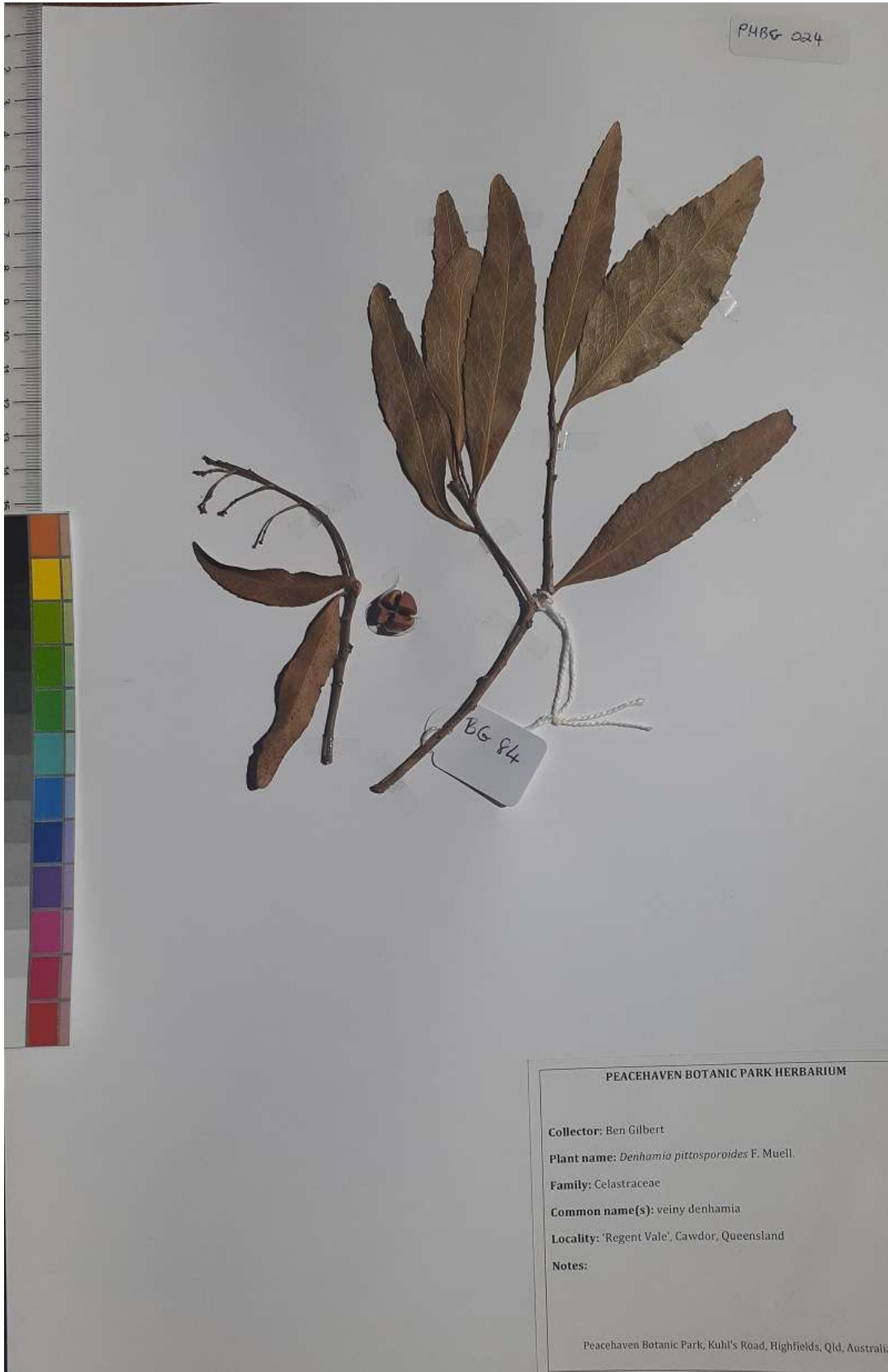
PHBG023



Celastraceae

*Denhamia pittosporoides* F. Muell. (Veiny denhamia)

PHBG024



Celastraceae

*Elaeodendron australe* Vent.

(Red olive plum)

PHBG025



Celastraceae

Siphonodon australis Benth.

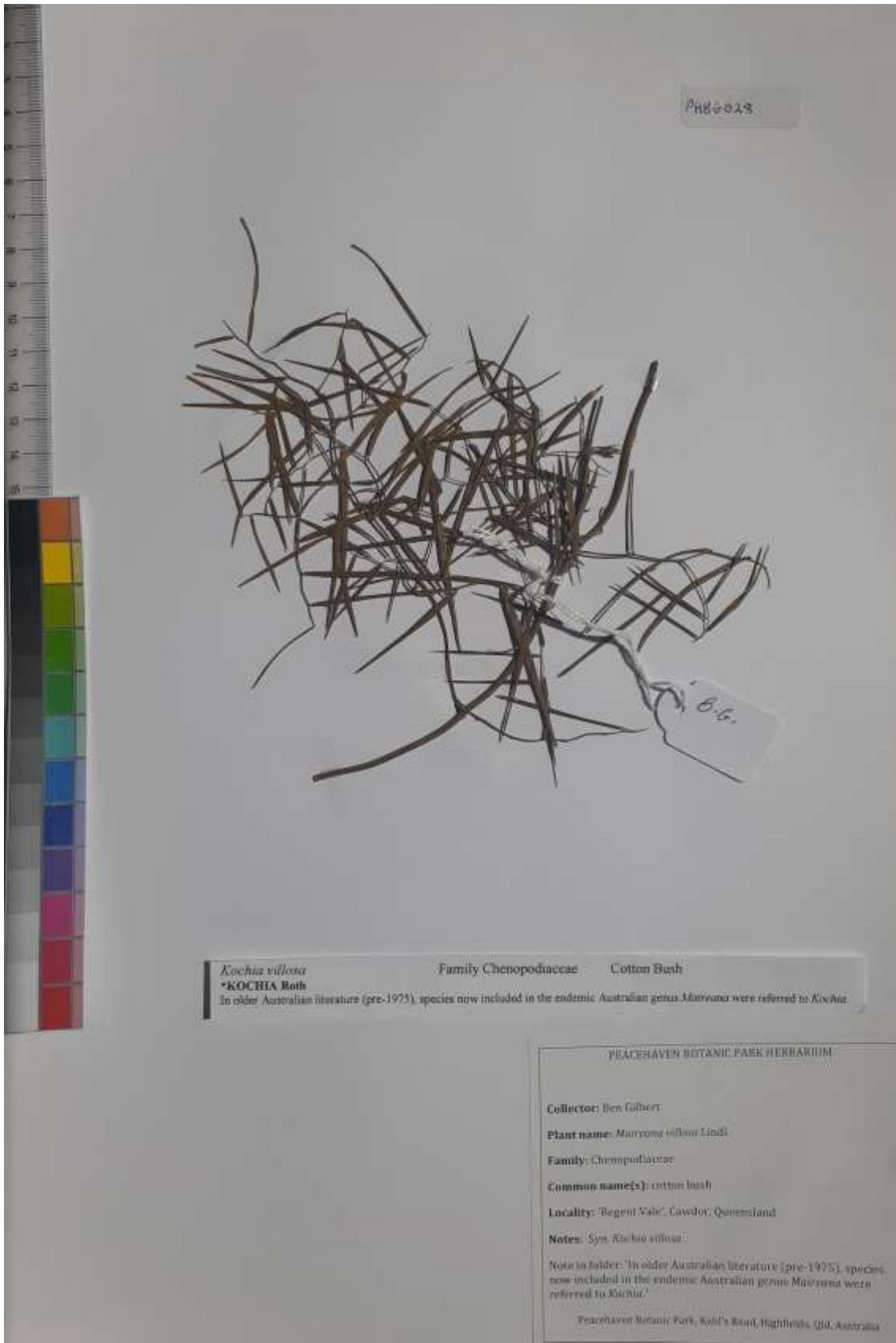
(Ivory wood) PHBG026



Chenopodiaceae    *Atriplex semibaccata* R. Br. (Creeping saltbush)    PHBG027



Chenopodiaceae    *Maireana villosa* (Lindl.) Paul. G. Wilson (Cotton bush)    PHBG028



Chenopodiaceae

Rhagodia sp.

(Berry saltbush)

PHBG029



Cucurbitaceae

Diplocyclos palmatus (L.) Jeffrey (Native bryony)

PHBG030



Ebenaceae

*Diospyros australis* (R. Br.) Hiern (Black plum)

PHBG031

1 of 2



PEACEHAVEN BOTANIC PARK HERBARIUM

Collector: Ben Gilbert  
Plant name: *Diospyros australis* (R. Br.) Hiern  
Family: Ebenaceae  
Common name(s): black plum  
Locality: Regent Vale, Lawford, Queensland  
Notes:

Ebenaceae

*Diospyros australis* (R. Br.) Hiern (Black plum)

PHBG031

2 of 2



Ebenaceae *Diospyros humilis* (R. Br.) F. Muell. (Small-leaved ebony)

PHBG032



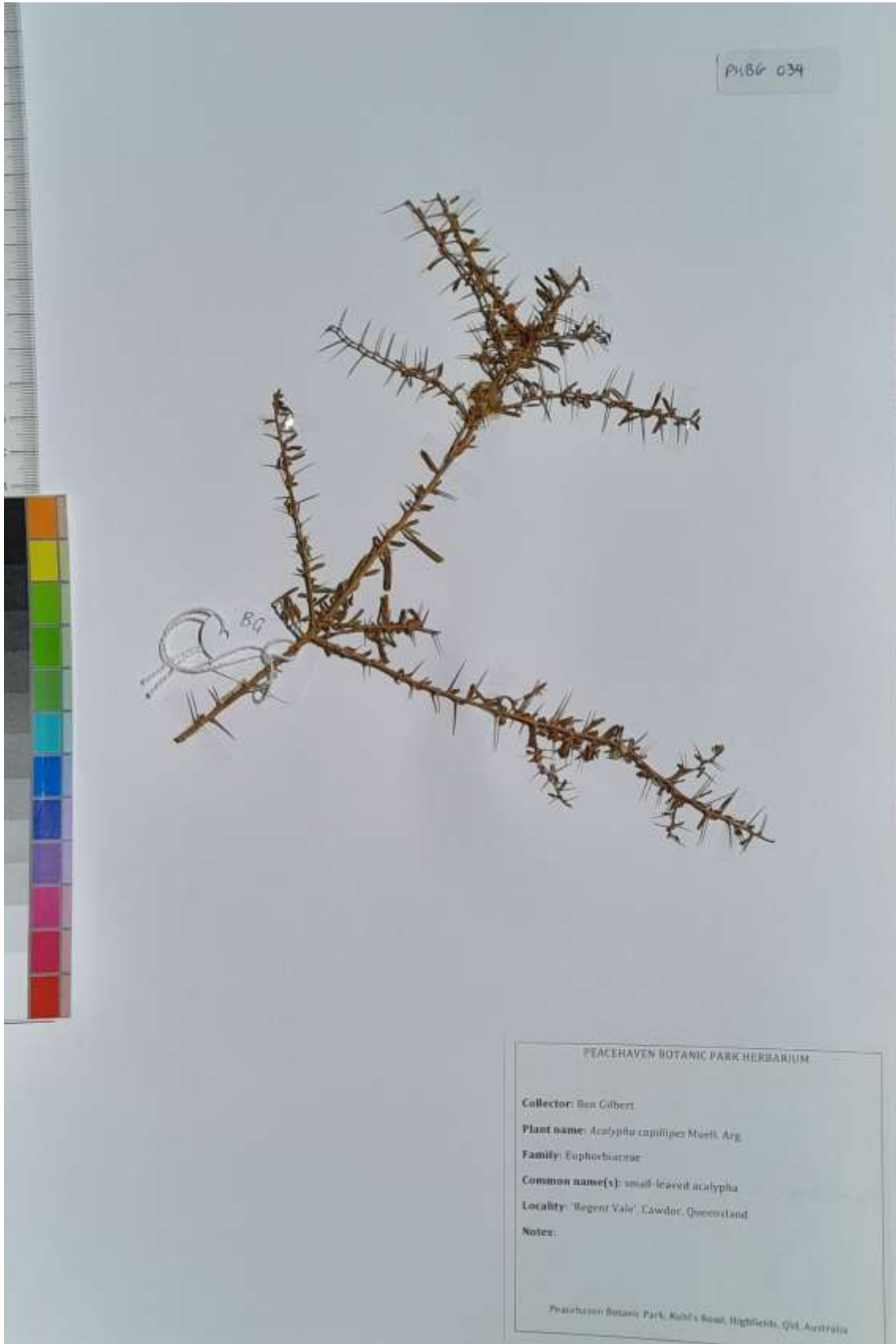
Erythroxylaceae

*Erythroxylum australe* F. Muell. (Dogwood)

PHBG033



Euphorbiaceae *Acalypha capillipes* Muell. Arg. (Small-leaved acalypha) PHBG034



Euphorbiaceae *Alchornea ilicifolia* (J. Sm.) Muell. Arg. (Native holly) PHBG035



Euphorbiaceae *Baloghia inophylla* (G. Forst.) P.S. Green (Scrub bloodwood) PHBG036



Euphorbiaceae

*Bertya oleifolia* Planch.

PHBG037



Euphorbiaceae

*Breynia oblongifolia* Muell. Arg.

(Coffee bush)

PHBG038



Euphorbiaceae

*Bridelia leichhardtii* Baill. ex Muell. Arg.

PHBG039

(Small-leaved brush ironbark)



Euphorbiaceae

*Claoxylon australe* Baill. (Brittlewood)

PHBG040



Euphorbiaceae

*Croton insularis* Baill.

(Silver croton)

PHBG041



Euphorbiaceae

*Croton phebaloides* F. Muell. ex Muell. Arg.

PHBG042

(Narrow-leaved croton)

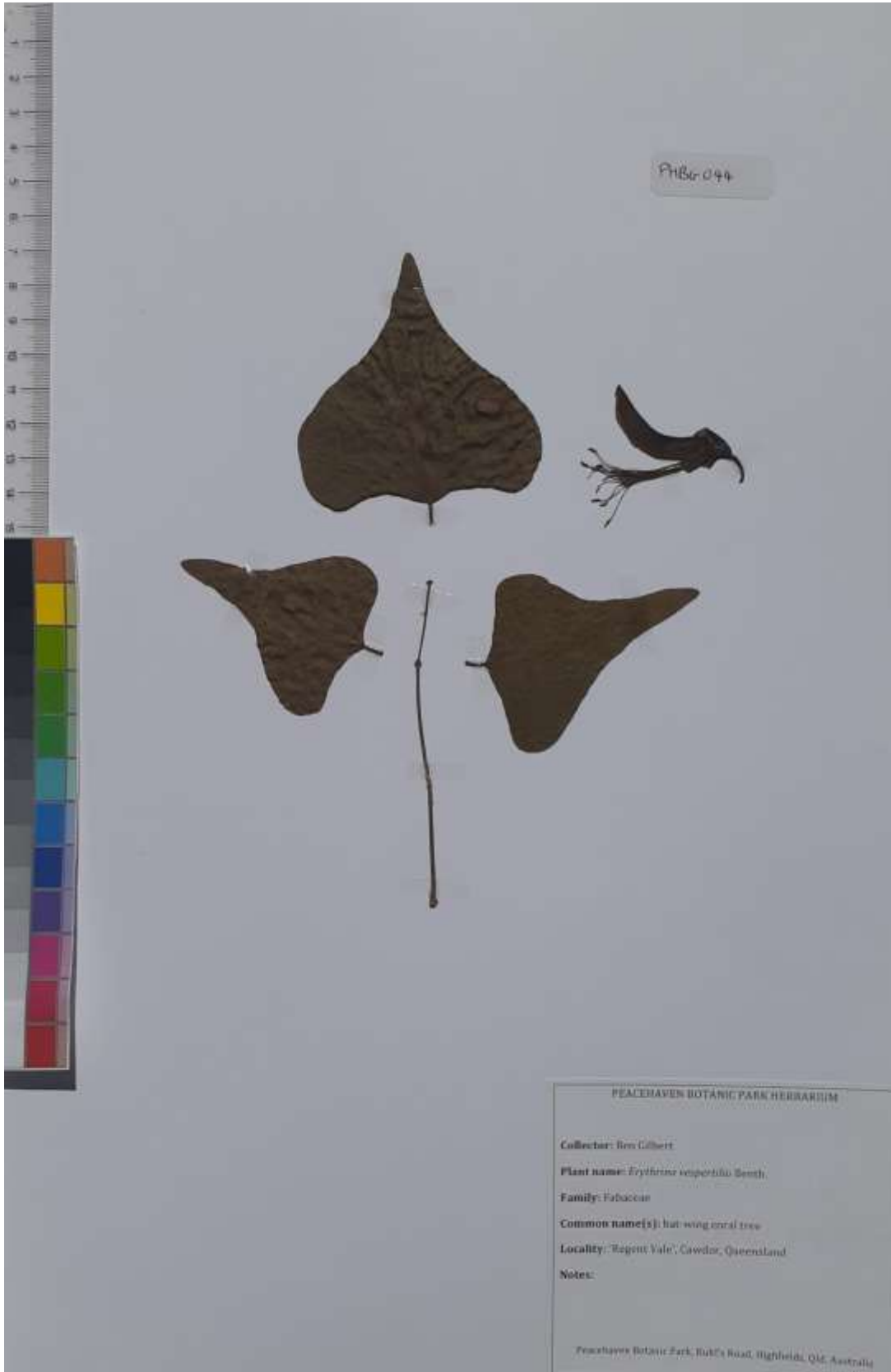


Euphorbiaceae *Excoecaria dallachyana* (Baill.) Benth. (Scrub poison tree) PHBG043



Fabaceae Erythrina vespertilio Benth. (Bat-wing coral tree)

PHBG044



Fabaceae    *Glycine clandestina* J.C. Wendl.    (Twining glycine)    PHBG045



Fabaceae

*Hovea longipes* Benth.

(Brush hovea)

PHBG046



Fabaceae

*Hovea pannosa* A. Cunn. ex Hook. f. (Rusty hovea)

PHBG047



Fabaceae

*Indigofera brevidens* Benth.

PHBG048



Fabaceae

*Sophora fraseri* Benth.

PHBG049



Flacourtiaceae *Casearia multinervosa* C.T. White & Sleumer (Casearia)

PHBG050



Lamiaceae *Clerodendrum tomentosum* R. Br. (Hairy-leaved lolly bush)

PHBG051



Lamiaceae

*Spartothamnella juncea* (A. Cunn. ex Walp.) Briq.  
(Square-leaved broom)

PHBG052



Lamiaceae

*Vitex lignum-vitae* A. Cunn. ex Schauer (Satinwood)

PHBG053



Laxmanniaceae *Eustrephus latifolius* R. Br. ex Ker Gawl. (Wombat berry) PHBG054



Loganiaceae

*Strychnos psilosperma* F. Muell. (Strychnine tree)

PHBG055



Loranthaceae *Amyema cambagei* (Blakely) Danser (She-oak mistletoe) PHBG056



Loranthaceae

*Amyema congener* subsp. *rotundifolia* Barlow

PHBG057



Loranthaceae

*Amyema lucasii* (Blakely) Danser

PHBG058



Loranthaceae

*Amyema miquelii* (Lehm. ex Miq.) Tiegh.

PHBG059



Loranthaceae

*Amylotheca dictyophleba* (F. Muell.) Tiegh.

PHBG060



Loranthaceae

*Lysiana subfalcata* (Hook.) Barlow

PHBG061



Malvaceae *Abutilon oxycarpum* (F. Muell.) F. Muell. ex Benth. PHBG062

(Flannel weed)



Meliaceae

*Melia azedarach* L. (White cedar)

PHBG063

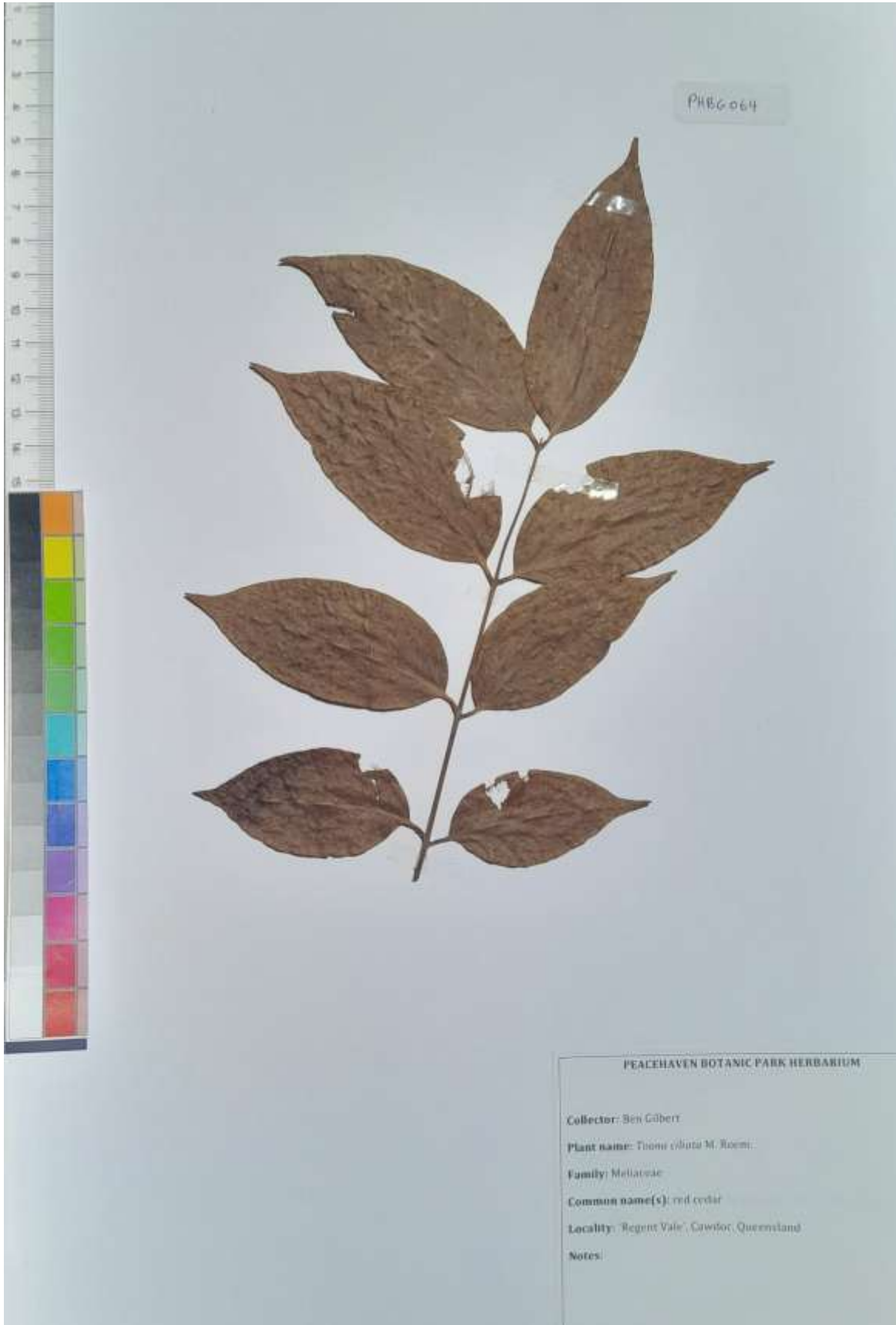


Meliaceae

*Toona ciliata* M. Roem.

(Red cedar)

PHBG064



Meliaceae

*Turraea pubescens* Hell. (Turraea)

PHBG065



Mimosaceae

*Acacia decora* Rchb.

(Pretty wattle)

PHBG066



Mimosaceae

*Acacia implexa* Benth.

(Hickory wattle)

PHBG067



PEACEHAVEN BOTANIC PARK HERBARIUM

Collector: Ben Gilbert  
Plant name: *Acacia implexa* Benth.  
Family: Fabaceae - subfamily Mimosoideae  
Common name(s): hickory wattle  
Locality: 'Regent Vale', Cassino, Queensland  
Notes:

Peacehaven Botanic Park, Rut's Road, Highfields, Qld, Australia

Mimosaceae

*Acacia irrorata* Sieber ex Spreng. (Green wattle)

PHBG068



Mimosaceae

*Acacia salicina* Lindl.

(Sally wattle)

PHBG069



Moraceae

*Ficus rubiginosa* Desf. ex Vent.

(Port Jackson fig)

PHBG070



Moraceae    *Maclura cochinchinensis* (Lour.) Corner    (Cockspur thorn)    PHBG071



Moraceae      *Streblus brunonianus* (Endl.) F. Muell.      (Whalebone tree)      PHBG072

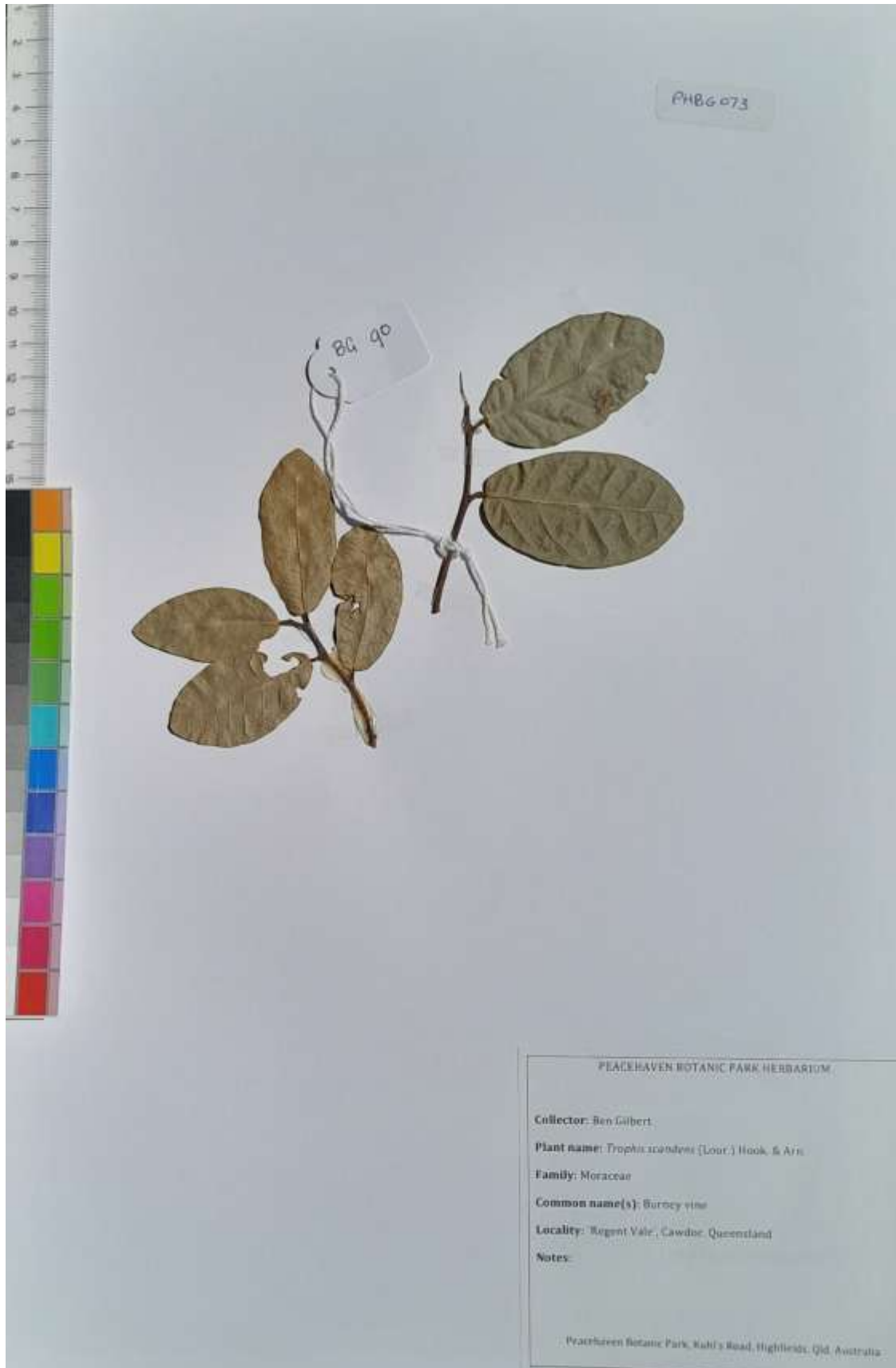


Moraceae

*Trophis scandens* (Lour.) Hook. & Arn.

(Burney vine)

PHBG073



Myrsinaceae

*Myrsine variabilis* R. Br.

(Muttonwood)

PHBG074



Myrtaceae

Angophora woodsiana F.M. Bailey (Apple box)\*

PHBG075



PEACEHAVEN BOTANIC PARK HERBARIUM

Collector: Ben Gilbert  
Plant name: *Myrsine variabilis* R. Br.  
Family: Myrsinaceae  
Common name(s): muttonwood  
Locality: Regent Vale, Cawdor, Queensland  
Notes: formerly *M. variabilis*

Peacehaven Botanic Park, Kahl's Road, Highfields, Qld, Australia.

Myrtaceae Eucalyptus crebra F. Muell. (Narrow-leaved ironbark) PHBG076



Myrtaceae

*Eucalyptus populnea* F. Muell.

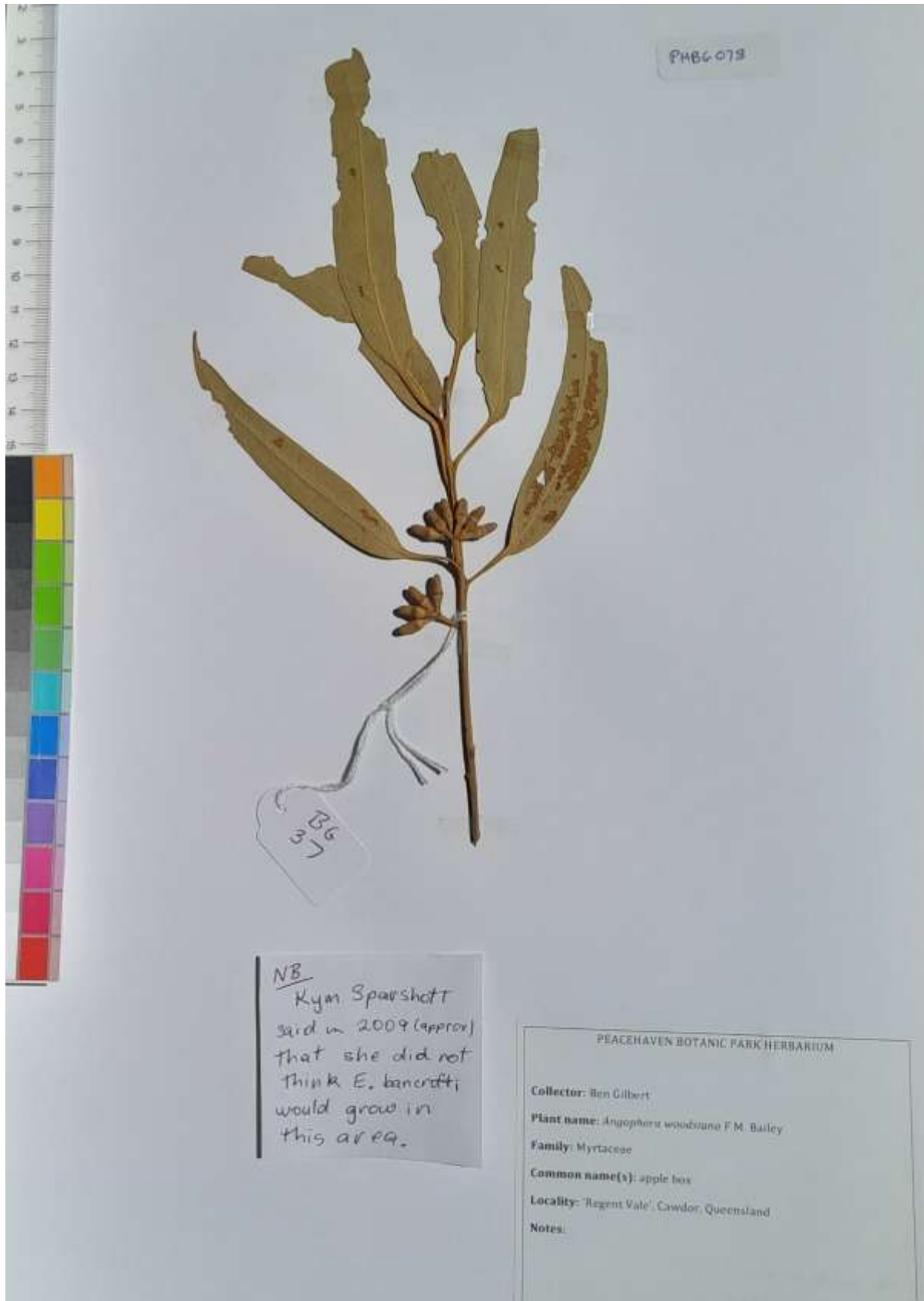
(Poplar box)

PHBG077



Myrtaceae Eucalyptus sp. aff. bancroftii (Maiden) Maiden  
(Orange gum)

PHBG078



NB  
Kym Sparshott  
said in 2009 (approx)  
that she did not  
think *E. bancroftii*  
would grow in  
this area.

PEACEHAVEN BOTANIC PARK HERBARIUM

Collector: Ben Gilbert  
Plant name: *Angophora woodiana* F.M. Bailey  
Family: Myrtaceae  
Common name(s): apple box  
Locality: 'Regent Vale', Cawdor, Queensland  
Notes:

Myrtaceae

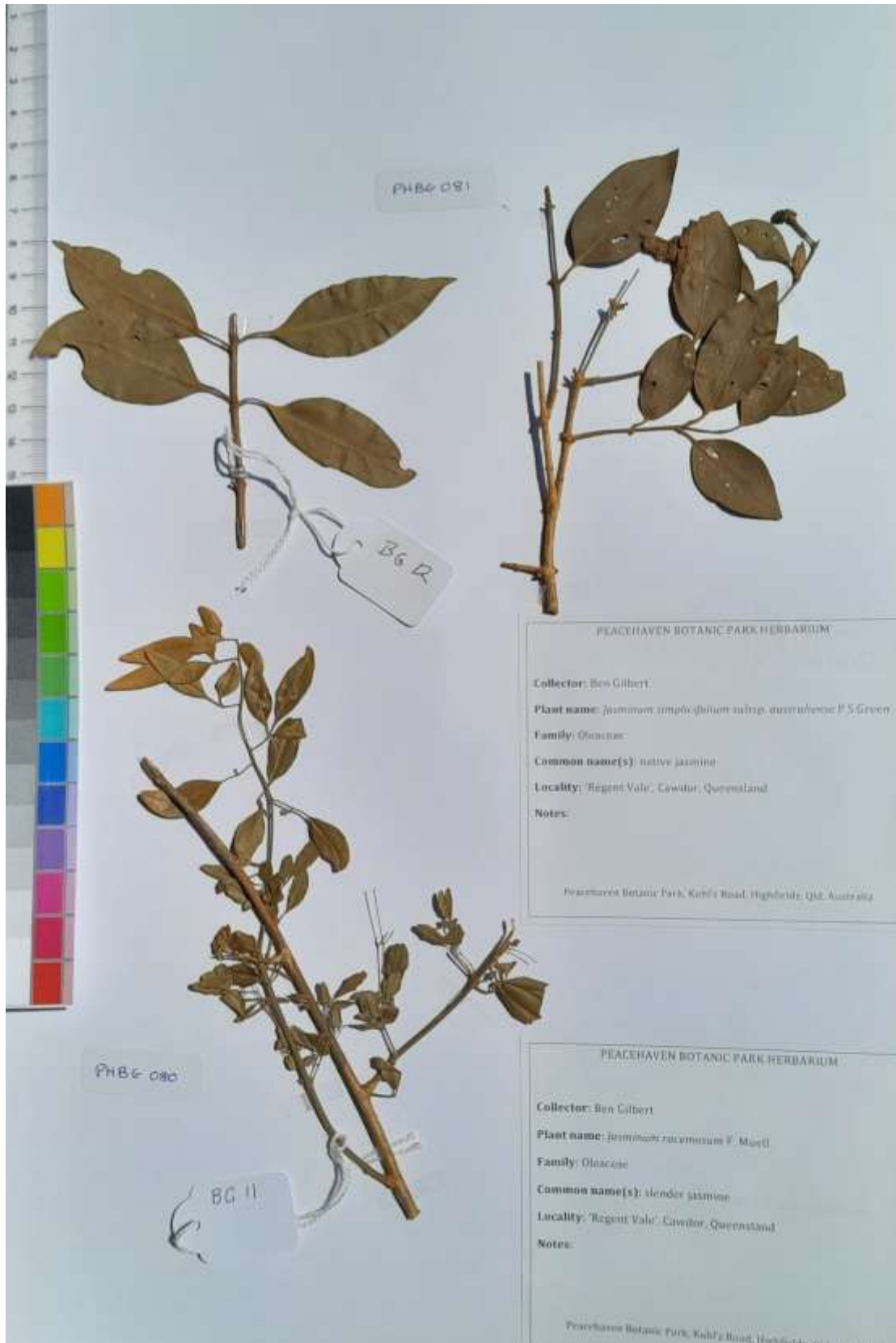
*Gossia bidwillii* (Benth.) N. Snow & Guymer (Python tree)

PHBG079



Oleaceae *Jasminum racemosum* F. Muell. (Slender jasmine) PHBG080

Oleaceae *Jasminum simplicifolium* subsp. *australiense* P.S. Green PHBG081  
(Native jasmine)



Oleaceae

*Notelaea linearis* Benth. (Native olive)

PHBG082

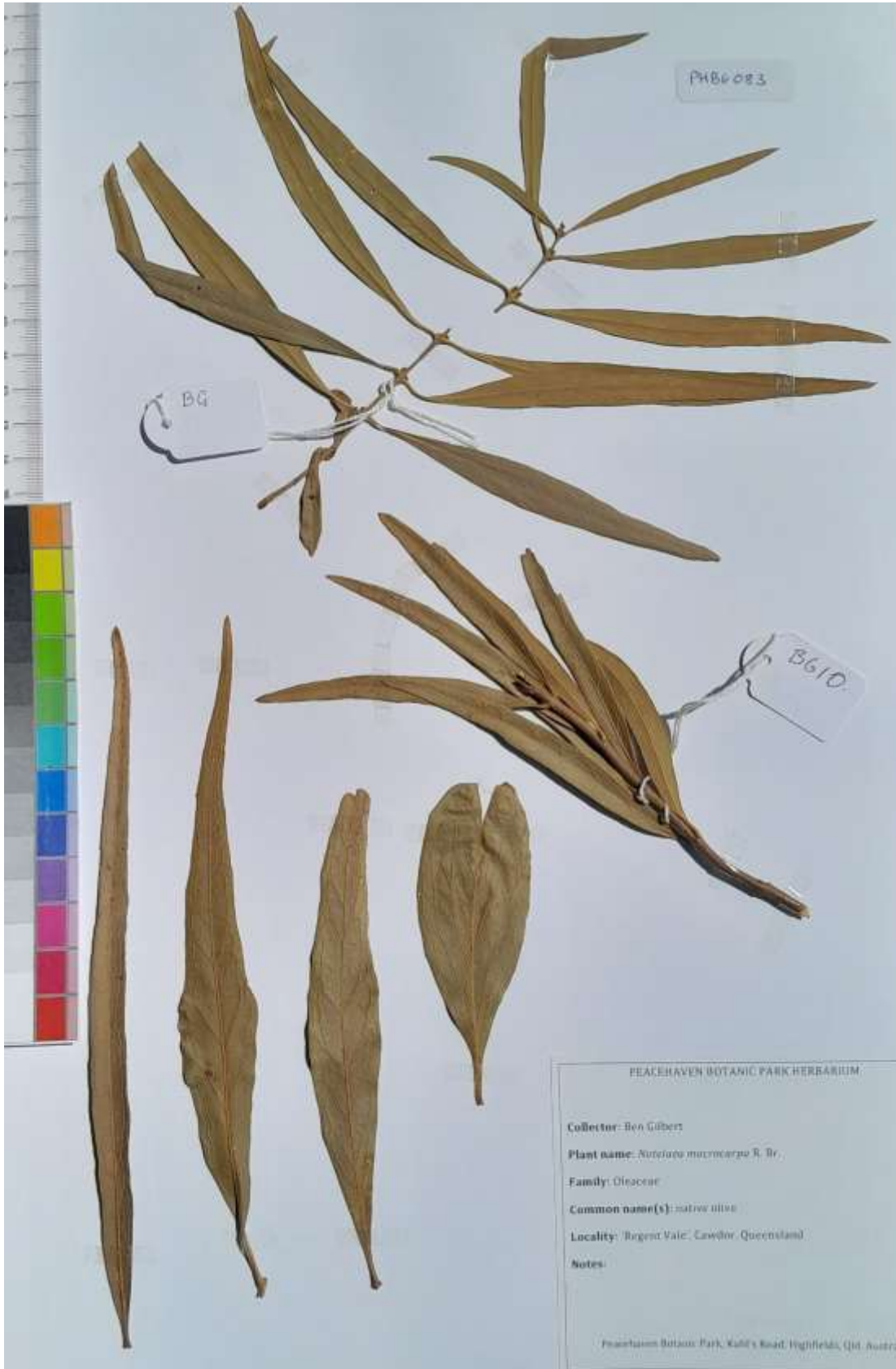


Oleaceae

*Notelaea macrocarpa* R. Br.

(Native olive)

PHBG083



Orchidaceae *Dendrobium tenuissimum* Rupp (Rat-tail orchid) PHBG084



Phyllanthaceae

*Actephila lindleyi* (Steud.) Airy Shaw (Actephila)

PHBG085



Pittosporaceae

*Bursaria incana* Lindl.

(Australian blackthorn)

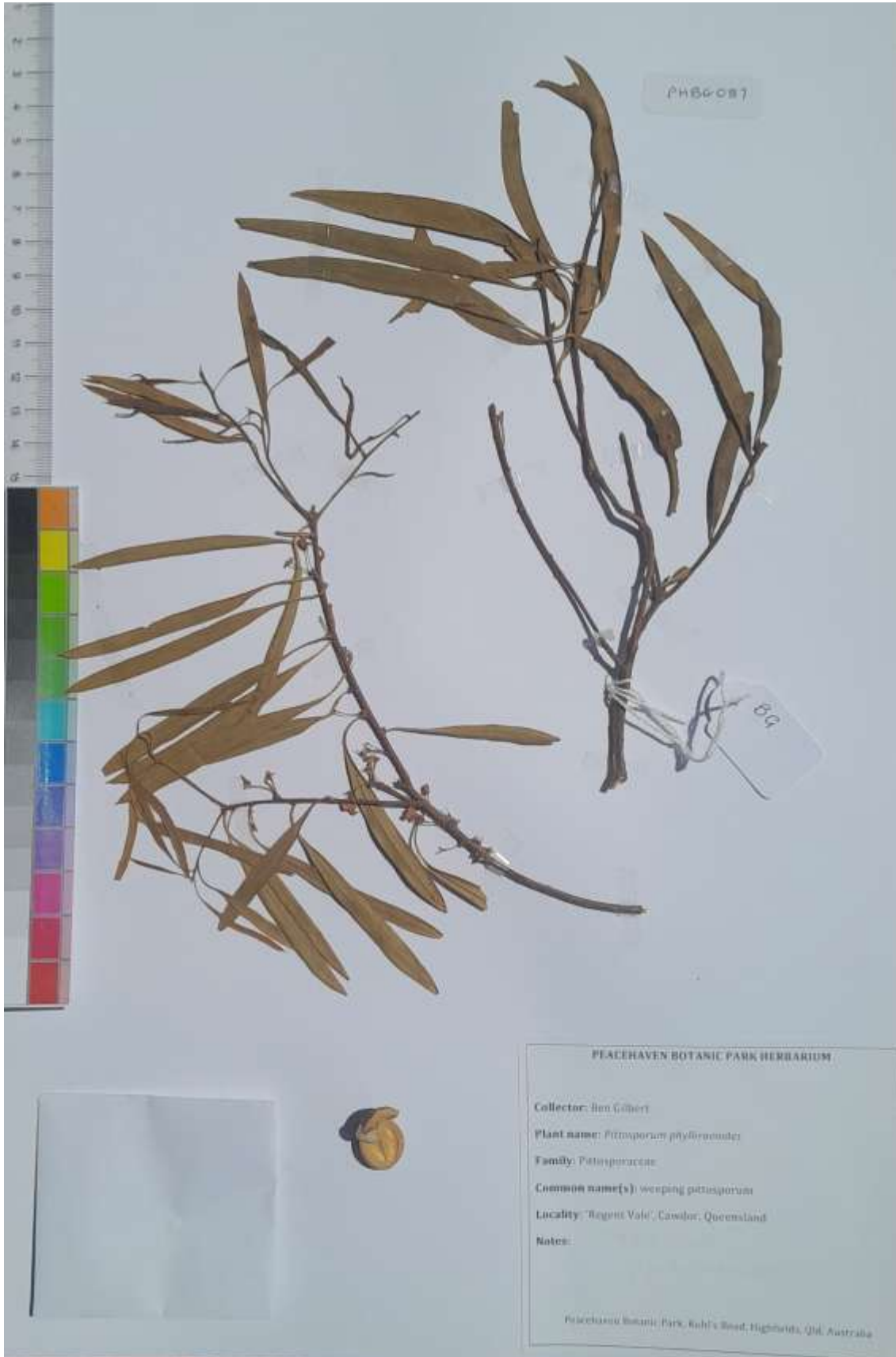
PHBG086



Pittosporaceae

*Pittosporum phylliraeoides* (Weeping pittosporum)

PHBG087



Pittosporaceae

*Pittosporum viscidum* L. Cayzer, Crisp & I. Telford

PHBG088

(Black-fruited thorn bush)



Polypodiaceae

*Pyrrosia confluens* (R. Br.) Ching (Robber fern)

PHBG089



Proteaceae

*Grevillea robusta* A. Cunn. ex R. Br. (Silky oak)

PHBG090



PEACEHAVEN BOTANIC PARK HERBARIUM

Collector: Ben Gilbert

Plant name: *Grevillea robusta* A. Cunn. ex R. Br.

Family: Proteaceae

Common name(s): silky oak

Locality: 'Regent Vale', Cawdor, Queensland

Notes:

Peacehaven Botanic Park, Kuhl's Road, Highfields, Qld, Austr

Putranjivaceae

*Drypetes deplanchei* (Brongn. & Gris) Merr.

PHBG091

(Yellow tulipwood)



Ranunculaceae *Clematis decipiens* H. Eichler ex Jeanes (Headache vine) PHBG092



Rhamnaceae *Alphitonia excelsa* (A. Cunn. ex Fenzl) Benth. (Red ash) PHBG093



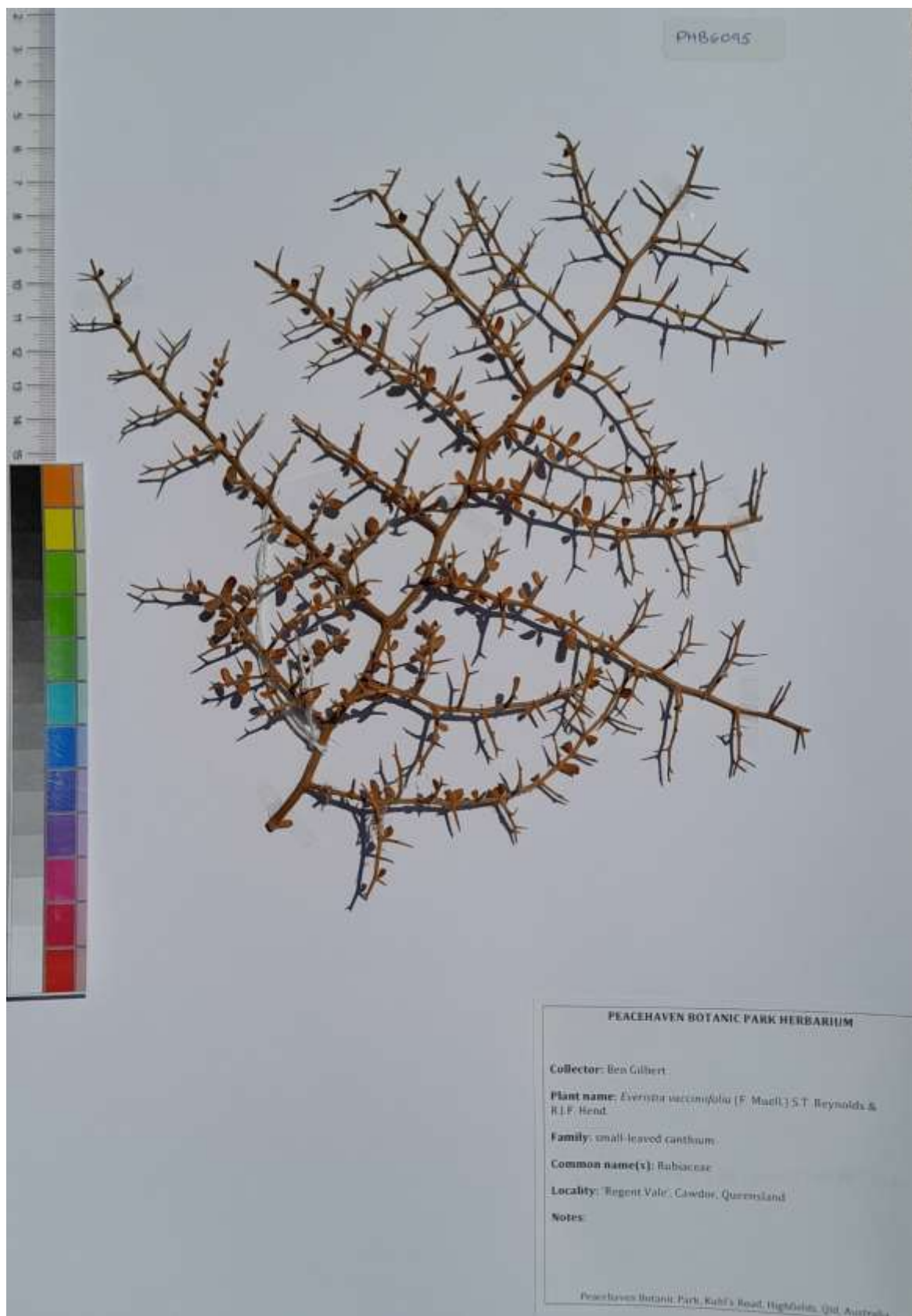
Rhamnaceae *Pomaderris queenslandica* C.T. White (Scant Pomaderris) PHBG094



Rubiaceae *Everistia vacciniifolia* (F. Muell.) S.T. Reynolds & R.J.F. Hend.

PHBG095

(Small-leaved canthium)



Rubiaceae *Psydrax odorata* f. *buxifolia* (Benth.) S.T. Reynolds & R.J.F. Hend. PHBG096

(Stiff canthium)



Rubiaceae *Triflorensia cameronii* (C.T. White) S.T. Reynolds

PHBG097



Rutaceae *Acronychia laevis* J.R. Forst. & G. Forst. (Hard aspen)

PHBG098



Rutaceae

*Dinosperma erythrocozum* (F. Muell.) T.G. Hartley

PHBG099

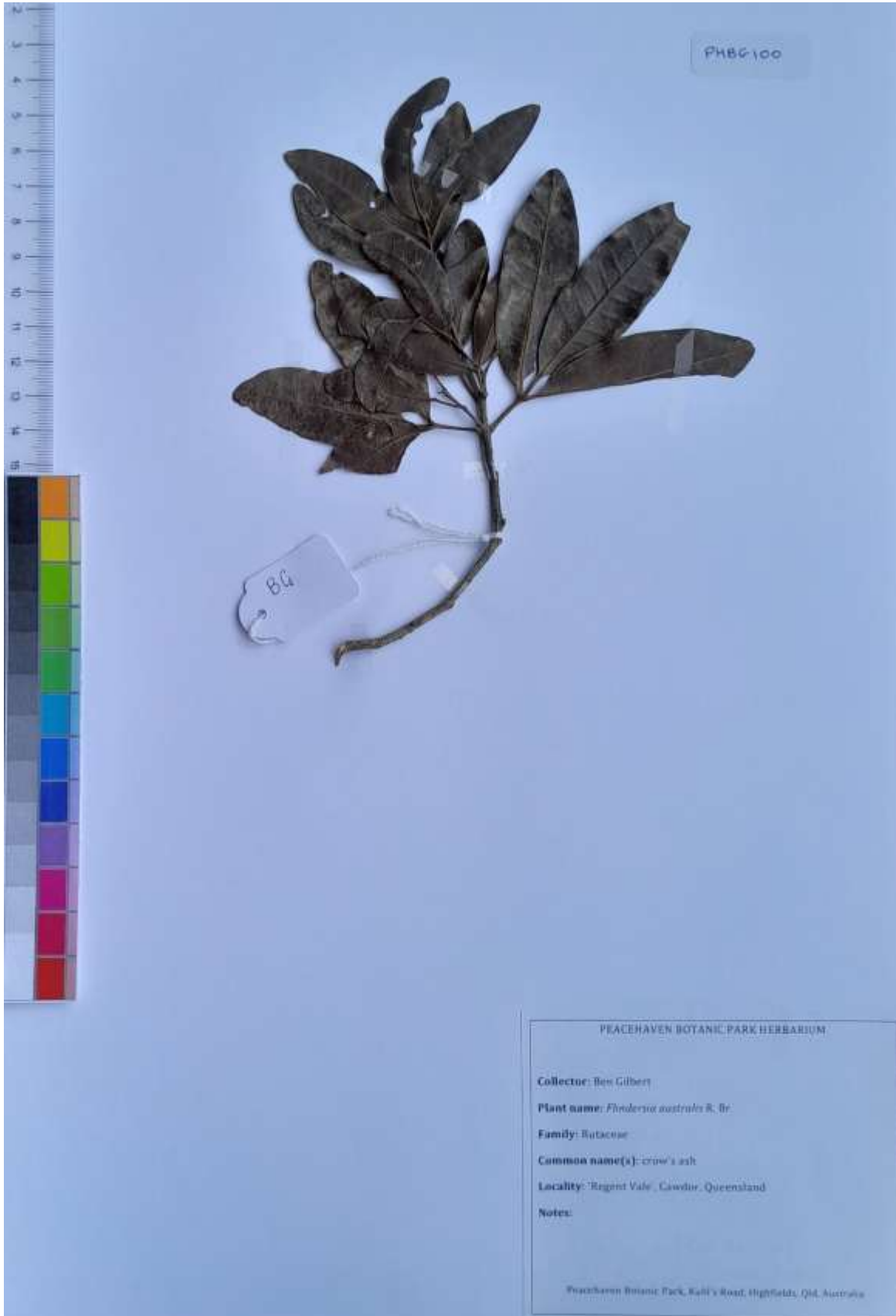
(White doughwood)



Rutaceae

*Flindersia australis* R. Br. (Crow's ash)

PHBG100



Rutaceae    *Flindersia collina* F.M. Bailey    (Broad-leaved leopard tree)    PHBG101



Rutaceae

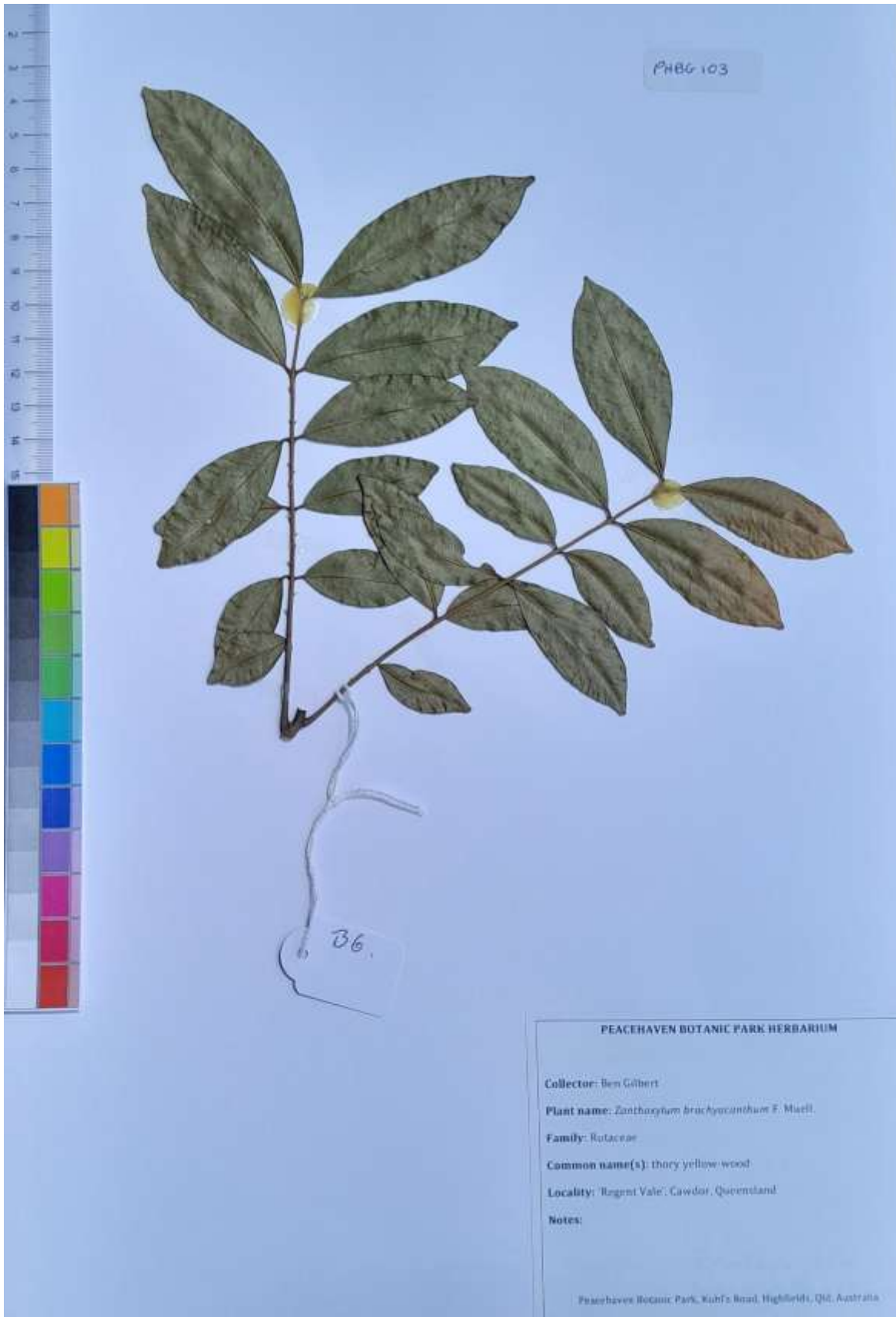
*Geijera salicifolia* Schott

(Broad-leaved scrub wilga)

PHBG102



Rutaceae *Zanthoxylum brachyacanthum* F. Muell. (Thorny yellow-wood) PHBG103



Santalaceae *Choretrum candollei* F. Muell. ex Benth. (White sour bush) PHBG104



Santalaceae *Exocarpos latifolius* R. Br. (Broad-leaved scrub cherry)

PHBG105



Santalaceae

*Santalum lanceolatum* R. Br. (Sandalwood)

PHBG106



Sapindaceae

*Alectryon diversifolius* (F. Muell.) S.T. Reynolds

PHBG107

(Scrub boonaree)



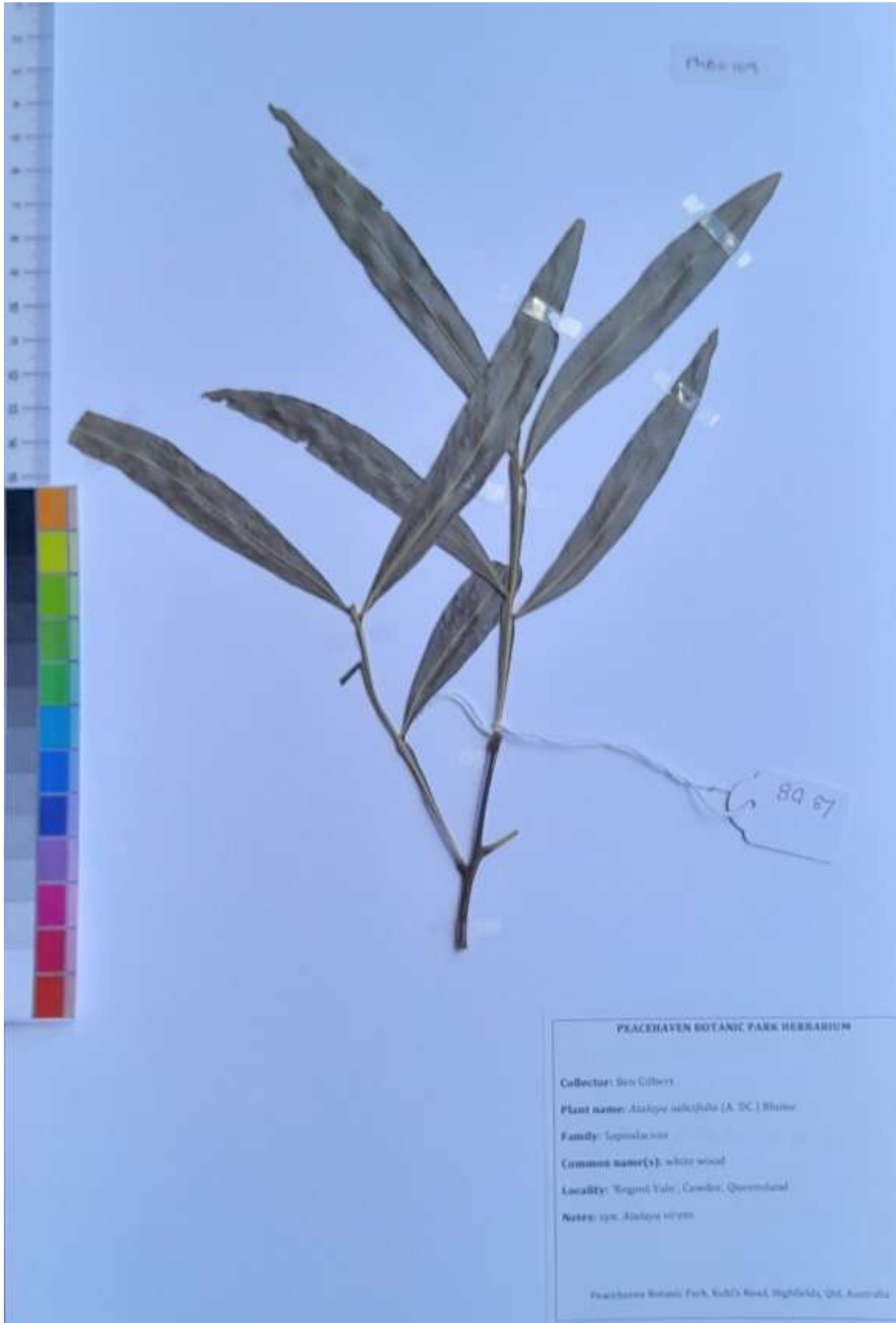
Sapindaceae *Alectryon tomentosus* (F. Muell.) Radlk. (Hairy bird's eye) PHBG108



Sapindaceae

*Atalaya salicifolia* (A. DC.) Blume (White wood)

PHBG109



Sapindaceae

*Cupaniopsis parvifolia* (F.M. Bailey) L.A.S. Johnson

PHBG110

(Small-leaved tuckeroo)

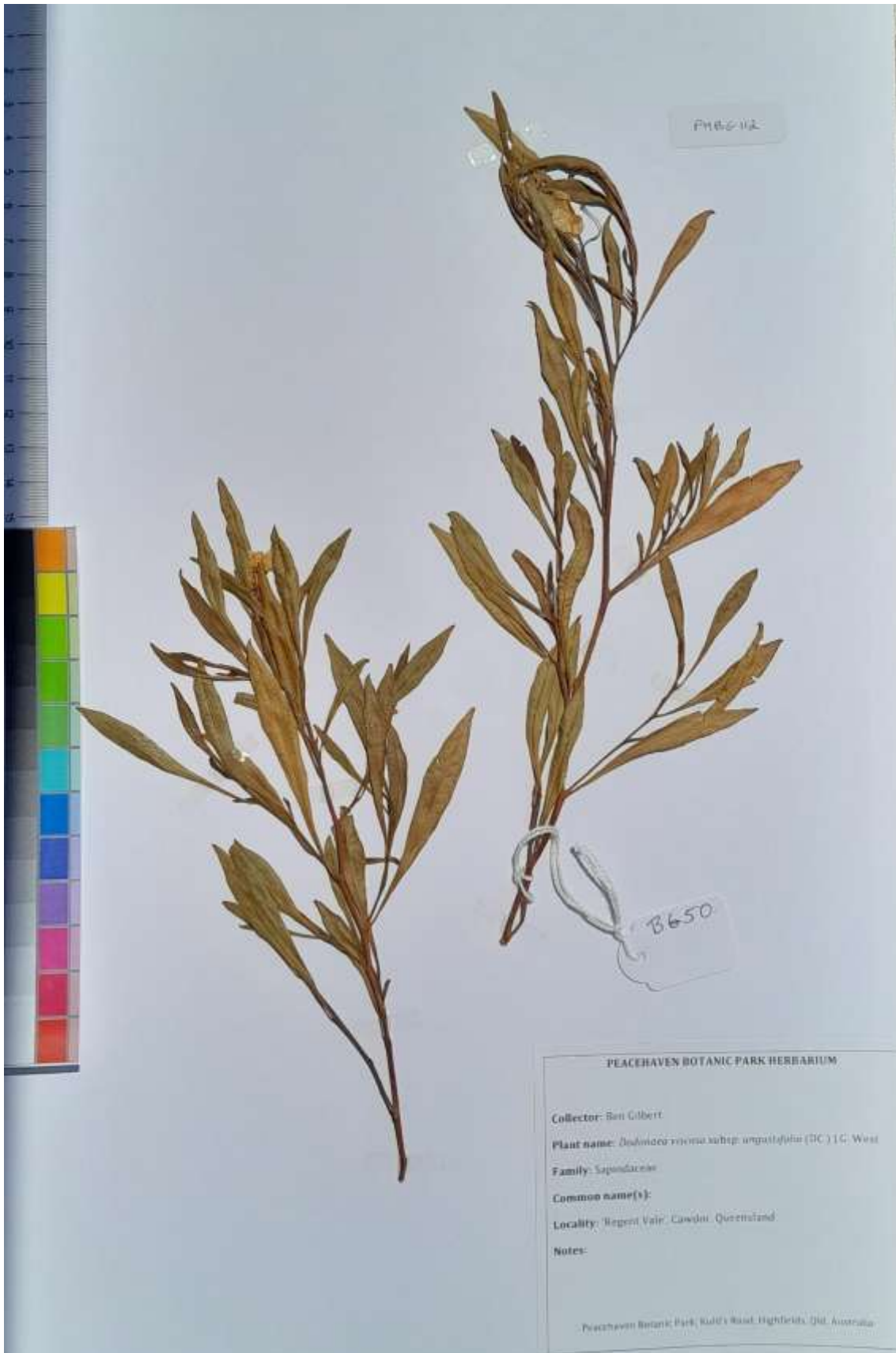


Sapindaceae    *Dodonaea lanceolata* F. Muell. (Lance-leaved hop bush)    PHBG111



Sapindaceae *Dodonaea viscosa* subsp. *angustissima* (DC.) J.G. West

PHBG112



Sapindaceae

*Elattostachys xylocarpa* (A. Cunn. ex F. Muell.) Radlk.

PHBG113

(White tamarind)



Sapotaceae

*Planchonella cotinifolia* (A. DC.) Dubard

PHBG114

(Small-leaved coonoo)



Smilacaceae

*Smilax australis* R. Br.

(Barbed-wire vine)

PHBG115



Solanaceae

*Solanum ellipticum* R. Br. (Wild potato bush)

PHBG116



Solanaceae

*Solanum semiarmatum* F. Muell. (Devil's whiskers)

PHBG117



Solanaceae

*Solanum stelligerum* Sm. (Devil's needles)

PHBG118

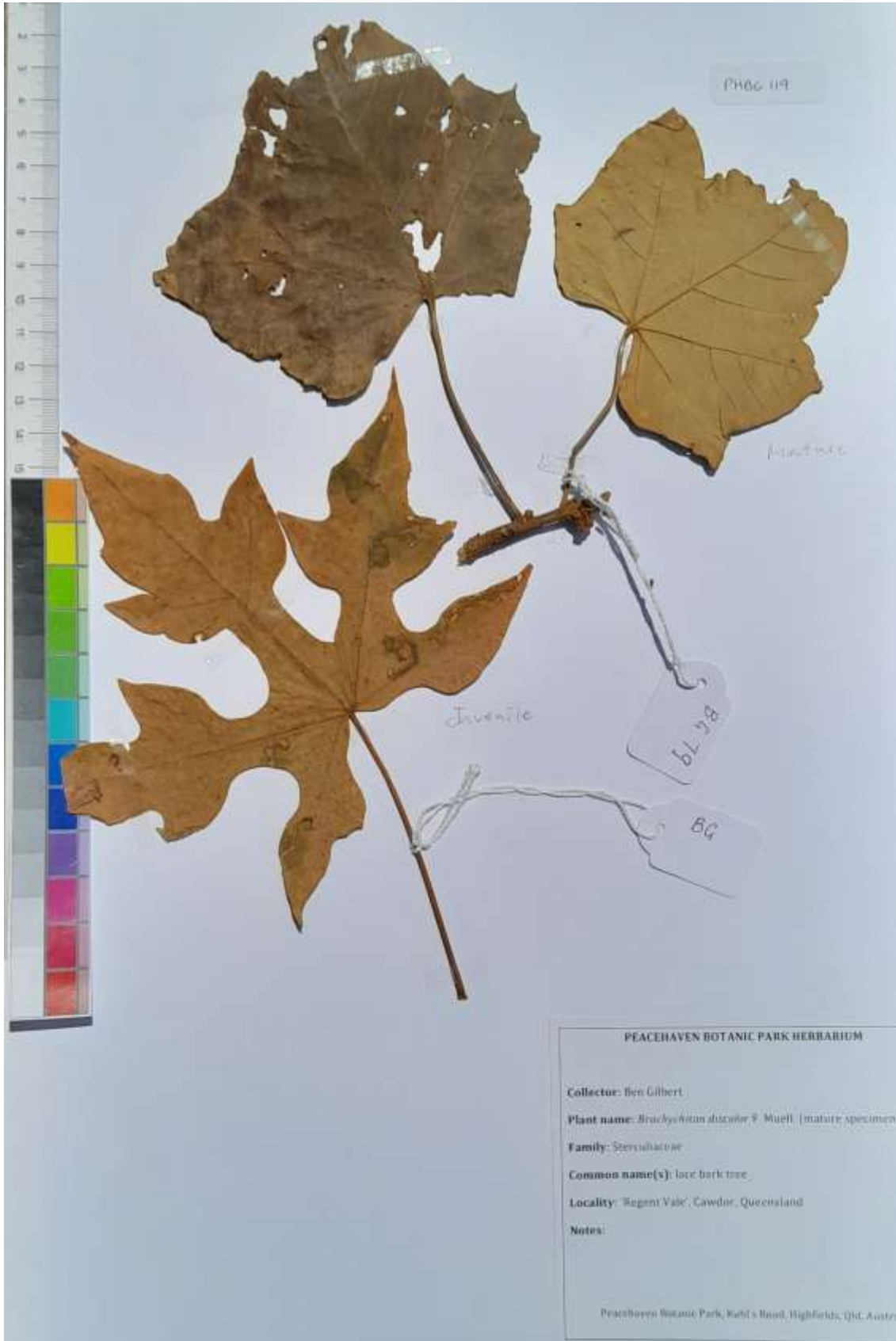


Sterculiaceae

*Brachychiton discolor* F. Muell.

(Lace bark tree)

PHBG119



Sterculiaceae

*Brachychiton diversifolius* (kurrajong) PHBG120



Sterculiaceae

*Brachychiton rupestre* (T.L. Mitch. ex Lindl.) K. Schum.

PHBG122

(Bottle tree)



Thymelaeaceae

*Pimelea pauciflora* R. Br. (Poison rice flower)

PHBG123



Thymelaeaceae

*Pimelea latifolia* R. Br.

PHBG124



Urticaceae *Dendrocnide excelsa* (Wedd.) Chew (Giant stinging tree) PHBG125



Urticaceae

*Dendrocnide photinophylla* (Kunth) Chew  
(Shiny leaved stinging tree)

PHBG126



Viscaceae

*Notothixos subaureus* Oliv.

(Golden mistletoe)

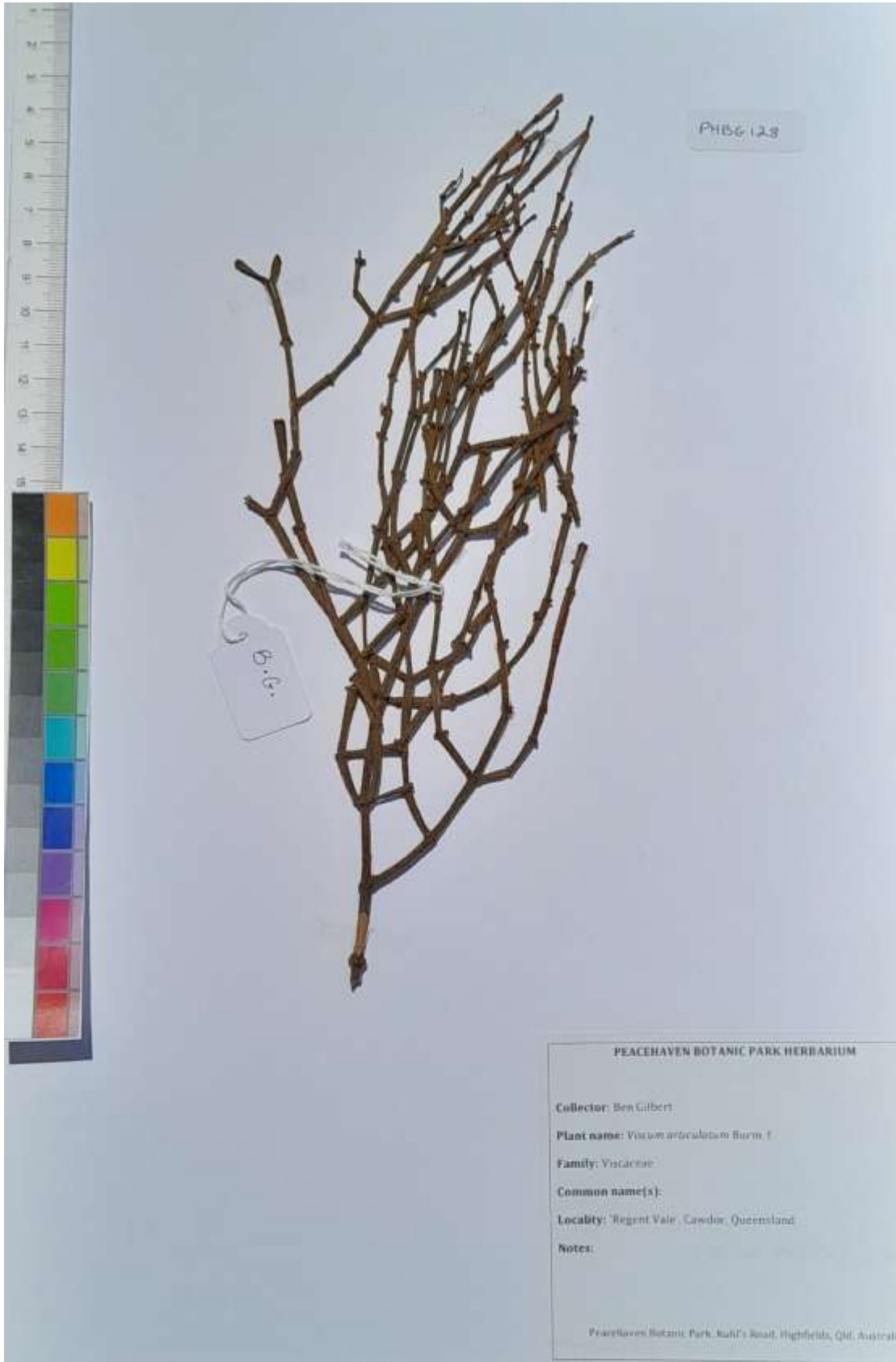
PHBG127



Viscaceae

*Viscum articulatum* Burm. f.

PHBG128

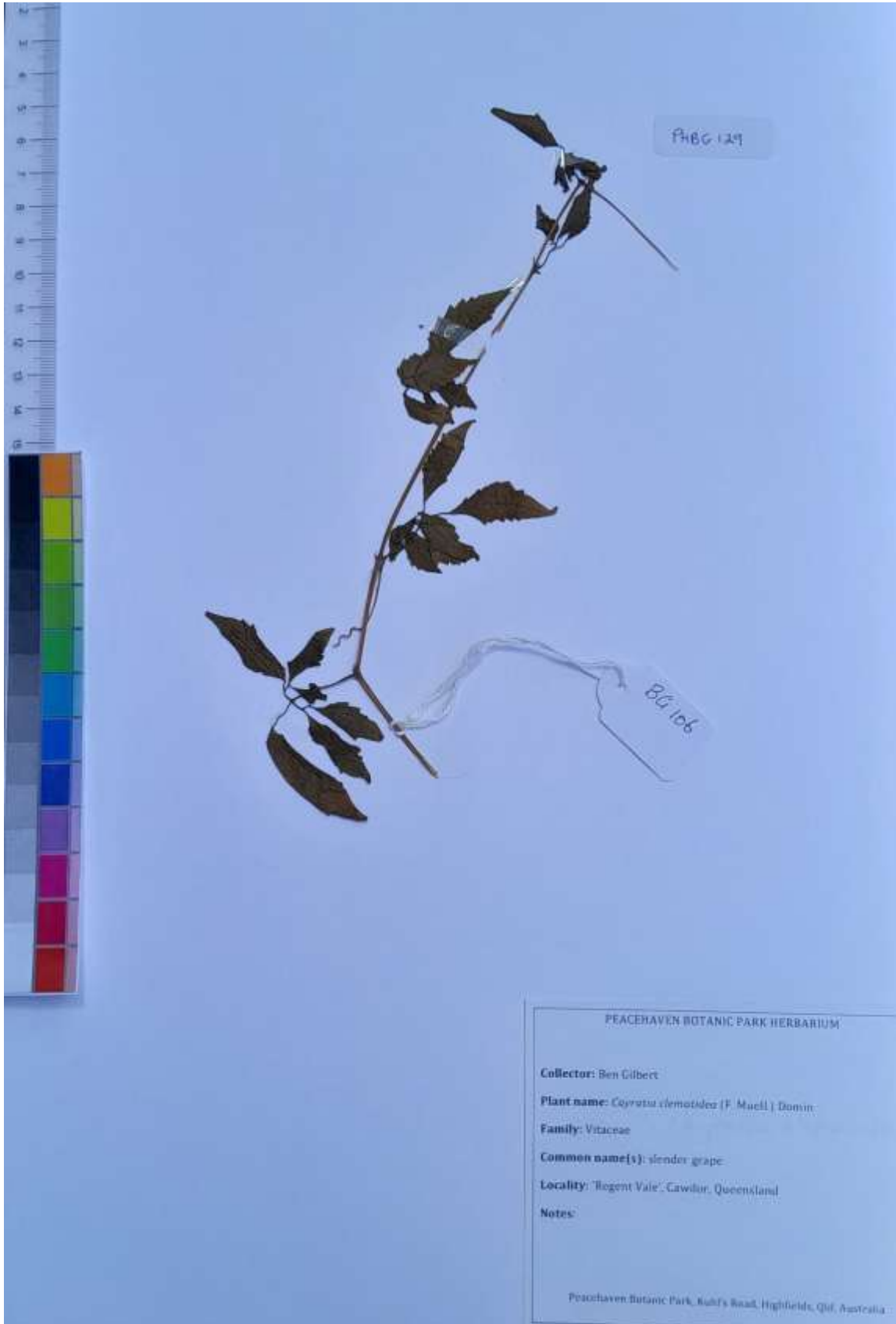


Viscaceae

*Cayratia clematidea* (F. Muell.) Domin

(Slender grape)

PHBG129



Viscaceae *Cayratia saponaria* (Benth.) Domin (Hairy water vine) PHBG130



Viscaceae    *Cayratia acris* (F. Muell.) Domin    (Smooth water vine)    PHBG131



Viscaceae

*Cissus antarctica* Vent. (Kangaroo vine)

PHBG132



Viscaceae

*Clematicissus opaca* (F. Muell.) Jackes & Rossetto

PHBG133

(Forest grape)

